

# GLIPR1L1 antibody



Catalog Number: 111024

## Product name

GLIPR1L1 antibody

## Specificity

Human; other species not tested.

## Antibody description

GLIPR1L1 Rabbit Polyclonal antibody. Positive IHC detected in human testis tissue. Positive WB detected in human testis tissue. Observed molecular weight by Western-blot: 24 kDa

## Preparation

This antibody was obtained by immunization of GLIPR1L1 recombinant protein (Accession Number: NM\_152779). Purification method: Antigen affinity purified.

## Formulation

PBS with 0.02% sodium azide and 50% glycerol pH 7.3.

## Storage

Store at -20°C. DO NOT ALIQUOT

## Clonality

Polyclonal

## Ig Type

Rabbit IgG

## Applications

ELISA, WB, IHC

## Dilutions

Recommended Dilution:

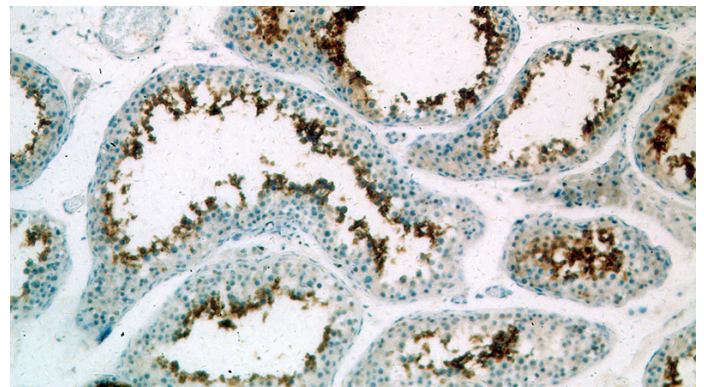
WB: 1:500-1:5000

IHC: 1:20-1:200

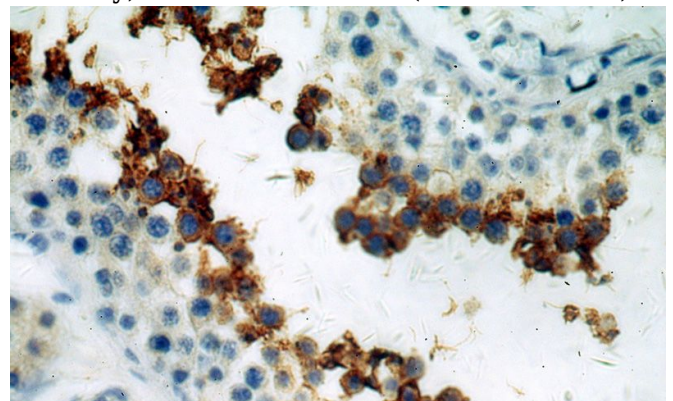
## Validations



human testis tissue were subjected to SDS PAGE followed by western blot with Catalog No:111024(GLIPR1L1 antibody) at dilution of 1:500



Immunohistochemical of paraffin-embedded human testis using Catalog No:111024(GLIPR1L1 antibody) at dilution of 1:100 (under 10x lens)



Immunohistochemical of paraffin-embedded human testis using Catalog No:111024(GLIPR1L1 antibody) at dilution of 1:100 (under 40x lens)