

# Anti-Cyclophilin B Rabbit antibody



Catalog Number: 168714

## Product name

Anti-Cyclophilin B Rabbit antibody

## Specificity

Human, Mouse, Rat

## Antibody description

Cyclophilin B Rabbit monoclonal antibody

## Preparation

Antigen: A synthetic peptide of human Cyclophilin B

## Formulation

50nM Tris-Glycine(pH 7.4), 0.15M NaCl, 40%Glycerol, 0.01% sodium azide and 0.05% BSA.

## Storage

Store at 4°C short term. Store at -20°C long term. Avoid freeze / thaw cycle.

## Clonality

Monoclonal

## Ig Type

Rabbit IgG

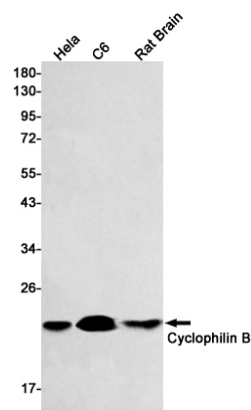
## Applications

WB

## Dilutions

WB: 1/2000

## Validations



Western blot detection of Cyclophilin B in HeLa,C6,Rat Brain lysates using Cyclophilin B Rabbit mAb(1:500 diluted).Predicted band size:24kDa.Observed band size:20kDa.