

## General Information

### Gene Name Synonym

EC 3.1.13.4; BTG1-binding factor 1; CCR4-associated factor 1; CAF-1; Caf1a

### Protein Construction

1-285 aa encoded by XM\_047421731 was inserted into PGEX-4T vector

### Organism

Human

### Expression Host

E. coli

## QC Testing

### Activity

Not tested.

### Purity

>90%

### Endotoxin

Please contact the lab for more information.

### Stability

Store for up to 12 months at -20°C to -80°C as lyophilized powder.

### Formulation

Protein lyophilized in sterile PBS (58 mM Na<sub>2</sub>HPO<sub>4</sub>, 17 mM NaH<sub>2</sub>PO<sub>4</sub>, 68 mM NaCl, 100

mM GSH, pH 8.0). Trehalose (5-8%) and mannitol (5-8%) protectants were added before lyophilization.

## Usage Guide

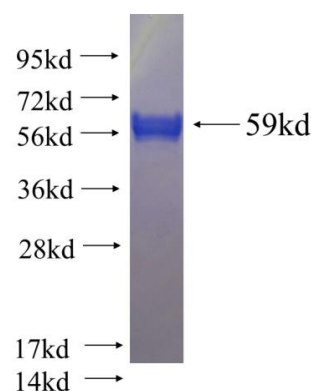
### Storage

Store it under sterile conditions at -20°C to -80°C. It is recommended that the protein be aliquoted for optimal storage. Avoid repeated freeze-thaw cycles.

### Reconstitution

Reconstitute at 0.25 µg/µl in sterile water for short-term storage. Reconstitution with 50% glycerol solution is recommended for longer term storage (see Stability and Storage for more details). If a different concentration is needed for your purposes please adjust the reconstitution volume as required (please note: the ion concentration of the final solution will vary according to the volume used). Note: Centrifuge vial before opening. When reconstituting, gently pipet and wash down the sides of the vial to ensure full recovery of the protein into solution.

## SDS-PAGE



Recombinant human CNOT7 SDS-PAGE