

# Anti-MyD88 Rabbit antibody



Catalog Number: 166714

## Product name

Anti-MyD88 Rabbit antibody

## Specificity

Human, Mouse, Rat

## Antibody description

MyD88 Rabbit polyclonal antibody

## Preparation

Antigen: The antiserum was produced against synthesized peptide derived from human MyD88. AA range:171-220

## Formulation

Liquid in PBS containing 50% glycerol, 0.5% BSA and 0.02% sodium azide.

## Storage

Store at 4°C short term. Store at -20°C long term. Avoid freeze / thaw cycle.

## Clonality

Polyclonal

## Ig Type

Rabbit IgG

## Applications

ICC/IF, WB, IHC-P, ELISA

## Dilutions

IF: 1/50-200

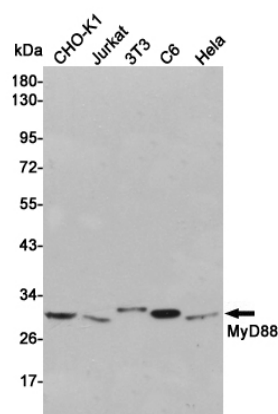
WB: 1/500 - 1/2000

IHC: 1/100 - 1/300

Immunocytochemistry: 1/200 - 1/1000

ELISA: 1/20000

## Validations



Western blot detection of MyD88 in CHO-K1, Jurkat, 3T3, C6 and HeLa cell lysates using MyD88 rabbit pAb (1:1000 diluted). Predicted band size: 33kDa. Observed band size: 33kDa.