

HTRA1 antibody

Catalog Number: 111714

Product name

HTRA1 antibody

IP: 1:200-1:2000

IHC: 1:20-1:200

Specificity

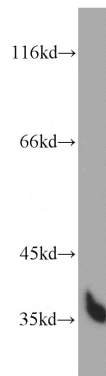
Human, Mouse, Rat; other species not tested.

IF: 1:10-1:100

Antibody description

HTRA1 Rabbit Polyclonal antibody. Positive IHC detected in human placenta tissue. Positive IF detected in HepG2 cells. Positive IP detected in L02 cells. Positive WB detected in L02 cells, HepG2 cells, mouse brain tissue. Observed molecular weight by Western-blot: 35 kDa, 50 kDa, 42 kDa

Validations



Preparation

This antibody was obtained by immunization of Peptide (Accession Number: NM_002775). Purification method: Antigen affinity purified.

L02 cells were subjected to SDS PAGE followed by western blot with Catalog No:111714(HTRA1 antibody) at dilution of 1:600

Formulation

PBS with 0.02% sodium azide and 50% glycerol pH 7.3.

Storage

Store at -20°C. DO NOT ALIQUOT

Clonality

Polyclonal

Ig Type

Rabbit IgG

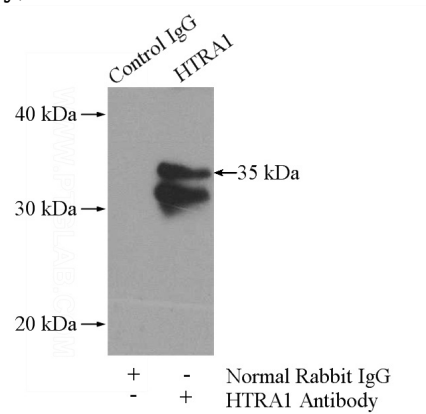
Applications

ELISA, WB, IF, IP, IHC

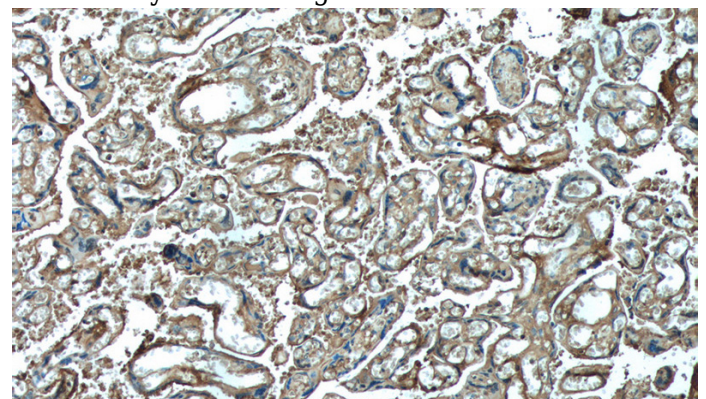
Dilutions

Recommended Dilution:

WB: 1:500-1:5000



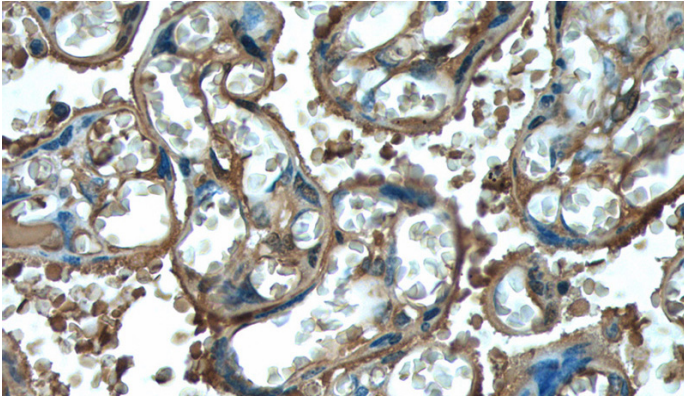
IP Result of anti-HTRA1 (IP:Catalog No:111714, 4ug; Detection:Catalog No:111714 1:500) with L02 cells lysate 1400ug.



HTRA1 antibody

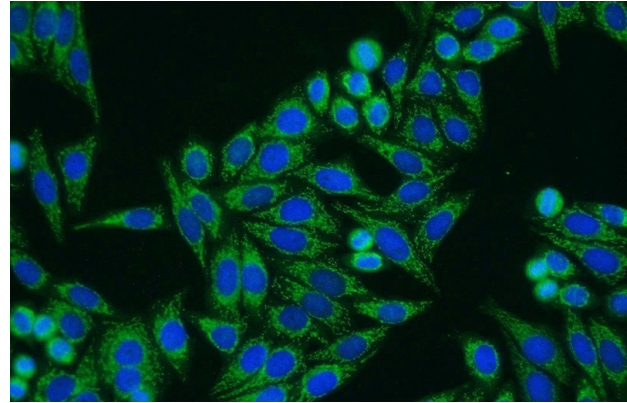
Catalog Number: 111714

Immunohistochemistry of paraffin-embedded human placenta tissue slide using Catalog No:111714(HTRA1 Antibody) at dilution of 1:200 (under 10x lens).



Immunohistochemistry of paraffin-embedded human placenta tissue slide using Catalog

No:111714(HTRA1 Antibody) at dilution of 1:200 (under 40x lens).



Immunofluorescent analysis of HepG2 cells using Catalog No:111714(HTRA1 Antibody) at dilution of 1:25 and Alexa Fluor 594-conjugated AffiniPure Goat Anti-Rabbit IgG(H+L)