

Anti-SLC1A3 antibody



Catalog Number: 100714

Product name

Anti-SLC1A3 antibody

Specificity

MOUSE SLC1A3

Antibody description

Rabbit polyclonal to SLC1A3

Preparation

Produced in rabbits immunized with a synthetic peptide corresponding to the center region of the MOUSE SLC1A3, and purified by antigen affinity chromatography.

Formulation

0.2 µm filtered solution in PBS

Storage

This antibody can be stored at 2°C-8°C for one month without detectable loss of activity. Antibody products are stable for twelve months from date of receipt when stored at -20°C to -80°C.

Preservative-Free.

Sodium azide is recommended to avoid contamination (final concentration 0.05%-0.1%). It is toxic to cells and should be disposed of properly. Avoid repeated freeze-thaw cycles.

Clonality

Polyclonal

Ig Type

Rabbit IgG

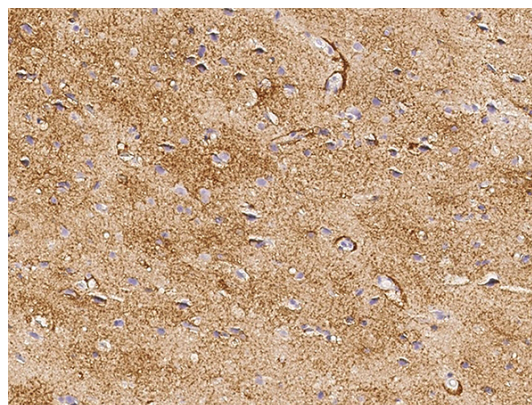
Applications

IHC-P

Dilutions

IHC-P: 0.1-2 µg/mL

Validations



SLC1A3 Antibody, Rabbit PAb, Antigen Affinity Purified, Immunohistochemistry

Immunochemical staining of human Slc1a3 in human brain with rabbit polyclonal antibody (0.5 µg/mL, formalin-fixed paraffin embedded sections).