

# Anti-Smad3 Rabbit antibody



Catalog Number: 167314

## Product name

Anti-Smad3 Rabbit antibody

ICC/IF: 1/50-1/200

FC: 1/50

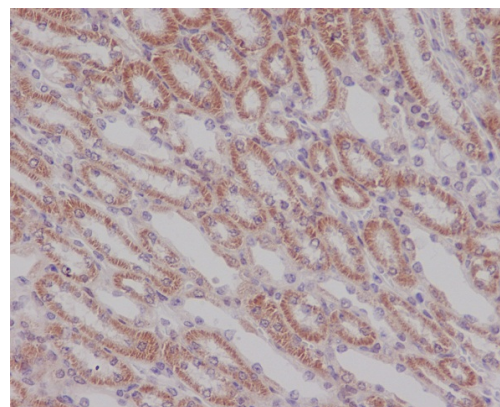
## Specificity

Human, Mouse, Rat

## Validations

## Antibody description

Smad3 Rabbit polyclonal antibody



## Preparation

Antigen: A synthesized peptide derived from human Smad3

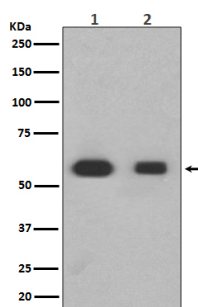
Immunohistochemical analysis of paraffin-embedded mouse kidney, using Smad3 Antibody.

## Formulation

Rabbit IgG in phosphate buffered saline , pH 7.4, 150mM NaCl, 0.02% sodium azide and 50% glycerol.

## Storage

Store at 4°C short term. Store at -20°C long term. Avoid freeze / thaw cycle.



## Clonality

Polyclonal

Western blot analysis of Smad3 expression in (1) Jurkat cell lysate; (2) Rat liver lysate.

## Ig Type

Rabbit IgG

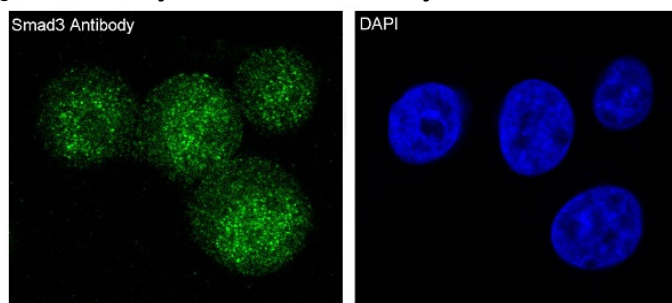
## Applications

WB, IHC-P, ICC/IF, FC

## Dilutions

WB: 1/500-1/2000

IHC: 1/50-1/200



Immunofluorescent analysis of HeLa cells, using Smad3 Antibody.