

# PEX14 Polyclonal Antibody



Catalog Number: 165314

## Product name

PEX14 Polyclonal Antibody

## Specificity

Human, Mouse, Rat

## Antibody description

Polyclonal antibody to PEX14

## Preparation

Antigen: Recombinant fusion protein containing a sequence corresponding to amino acids 118-377 of human PEX14 (NP\_004556.1).

## Formulation

PBS with 0.02% sodium azide, 50% glycerol, pH7.3.

## Storage

Store at -20°C. Avoid freeze / thaw cycles.

## Clonality

Polyclonal

## Ig Type

Rabbit IgG

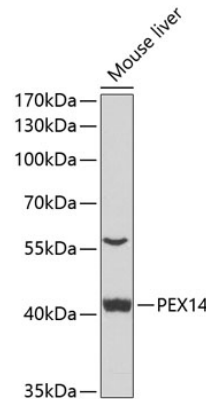
## Applications

WB, IHC, IF

## Dilutions

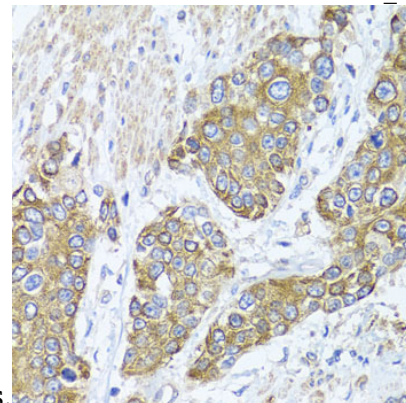
WB 1:500 - 1:2000  
IHC 1:50 - 1:200  
IF 1:50 - 1:200

## Validations



## Western blot - PEX14 Polyclonal Antibody

Western blot analysis of extracts of mouse liver, using PEX14 antibody at 1:1000 dilution. Secondary antibody: HRP Goat Anti-Rabbit IgG (H+L) at 1:10000 dilution. Lysates/proteins: 25ug per lane. Blocking buffer: 3% nonfat dry milk in TBST. Detection: ECL Enhanced Kit. Exposure



time: 90s.

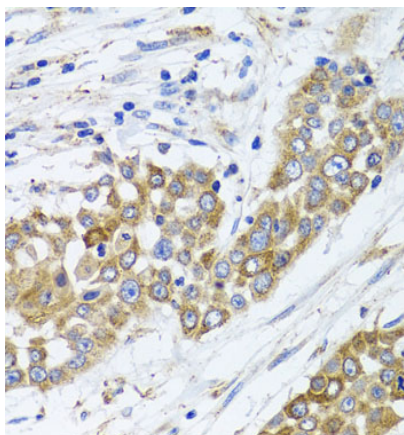
## Immunohistochemistry - PEX14 Polyclonal Antibody

Immunohistochemistry of paraffin-embedded human prostate cancer using PEX14 antibody at dilution of 1:100 (40x lens).

# PEX14 Polyclonal Antibody

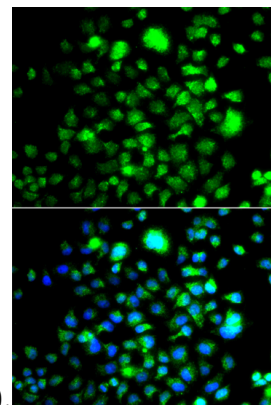
Catalog Number: 165314

---



Immunohistochemistry - PEX14 Polyclonal Antibody

Immunohistochemistry of paraffin-embedded human colon carcinoma using PEX14 antibody at



dilution of 1:100 (40x lens).

Immunohistochemistry - PEX14 Polyclonal Antibody

Immunohistochemistry of paraffin-embedded human liver injury using PEX14 antibody at dilution of 1:100 (40x lens).