

# ACTR2 Polyclonal Antibody



Catalog Number: 164614

## Product name

ACTR2 Polyclonal Antibody

## Specificity

Human, Mouse, Rat

## Antibody description

Polyclonal antibody to ACTR2

## Preparation

Antigen: Recombinant fusion protein containing a sequence corresponding to amino acids 1-160 of human ACTR2 (NP\_005713.1).

## Formulation

PBS with 0.02% sodium azide, 50% glycerol, pH7.3.

## Storage

Store at -20°C. Avoid freeze / thaw cycles.

## Clonality

Polyclonal

## Ig Type

Rabbit IgG

## Applications

WB, IHC, IF

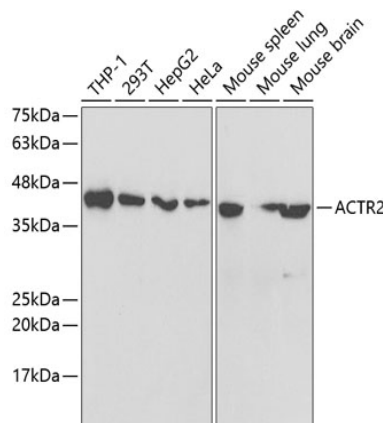
## Dilutions

WB 1:500 - 1:2000

IHC 1:50 - 1:200

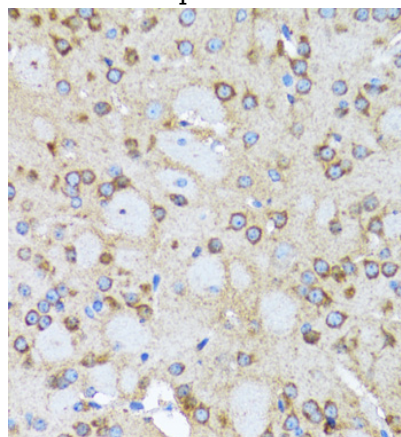
IF 1:50 - 1:200

## Validations



Western blot - ACTR2 Polyclonal Antibody

Western blot analysis of extracts of various cell lines, using ACTR2 antibody at 1:1000 dilution. Secondary antibody: HRP Goat Anti-Rabbit IgG (H+L) at 1:10000 dilution. Lysates/proteins: 25ug per lane. Blocking buffer: 3% nonfat dry milk in TBST. Detection: ECL Basic Kit. Exposure time: 90s.



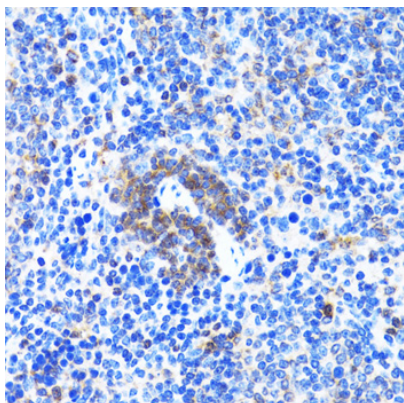
Western blot - ACTR2 Polyclonal Antibody

Western blot analysis of extracts of various cells, using ACTR2 antibody at 1:1000 dilution ratio through one-step method. Secondary antibody: HRP Goat Anti-Rabbit IgG (H+L) at 1:4000 dilution. Lysates/proteins: 25ug per lane. Blocking buffer: 3% nonfat dry milk in TBST. Detection: ECL Basic Kit. Exposure time: 90s.

# ACTR2 Polyclonal Antibody

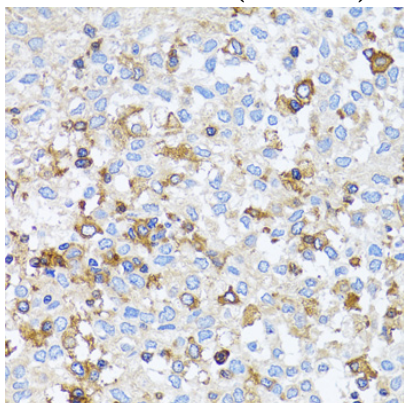


Catalog Number: 164614



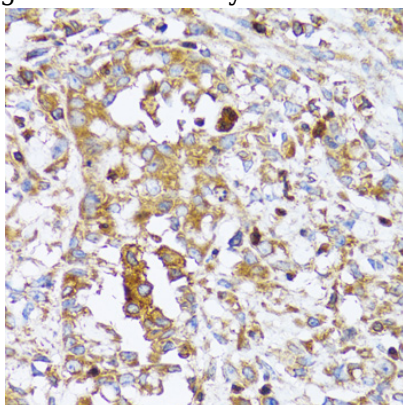
Immunohistochemistry - ACTR2 Polyclonal Antibody

Immunohistochemistry of paraffin-embedded human liver cancer using ACTR2 antibody at dilution of 1:100 (40x lens).



Immunohistochemistry - ACTR2 Polyclonal Antibody

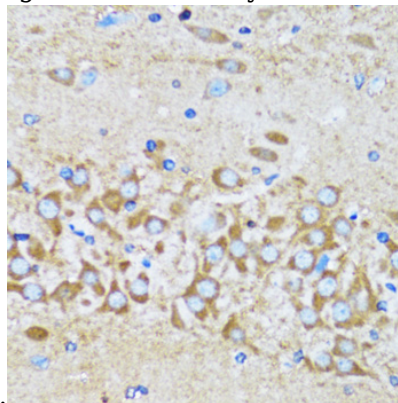
Immunohistochemistry of paraffin-embedded rat brain using ACTR2 antibody at dilution of 1:100



(40x lens).

Immunohistochemistry - ACTR2 Polyclonal Antibody

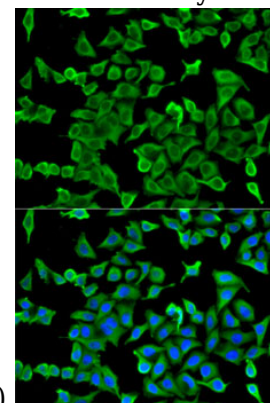
Immunohistochemistry of paraffin-embedded rat spleen using ACTR2 antibody at dilution of 1:100



(40x lens).

Immunohistochemistry - ACTR2 Polyclonal Antibody

Immunohistochemistry of paraffin-embedded human lung cancer using ACTR2 antibody at



dilution of 1:100 (40x lens).

Immunohistochemistry - ACTR2 Polyclonal Antibody

Immunohistochemistry of paraffin-embedded human uterine cancer using ACTR2 antibody at dilution of 1:100 (40x lens).