

Midkine antibody

Catalog Number: 112614

Product name

Midkine antibody

Specificity

Human, Mouse, Rat; other species not tested.

Antibody description

Midkine Rabbit Polyclonal antibody. Positive IF detected in HepG2 cells. Positive IHC detected in human colon cancer tissue, human liver cancer tissue, human pancreas cancer tissue, human prostate cancer tissue.

Preparation

This antibody was obtained by immunization of Midkine recombinant protein (Accession Number: XM_011520116). Purification method: Antigen affinity purified.

Formulation

PBS with 0.1% sodium azide and 50% glycerol pH 7.3.

Storage

Store at -20°C. DO NOT ALIQUOT

Clonality

Polyclonal

Ig Type

Rabbit IgG

Applications

ELISA, IF, IHC

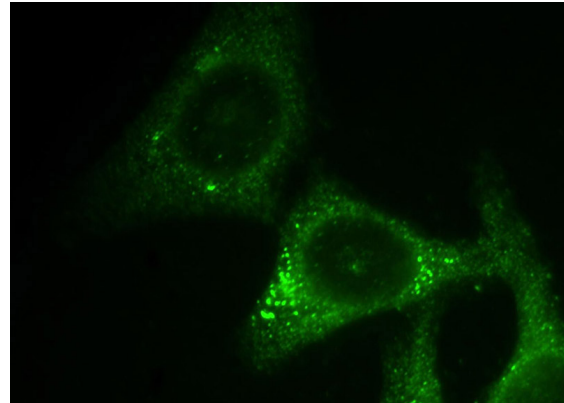
Dilutions

Recommended Dilution:

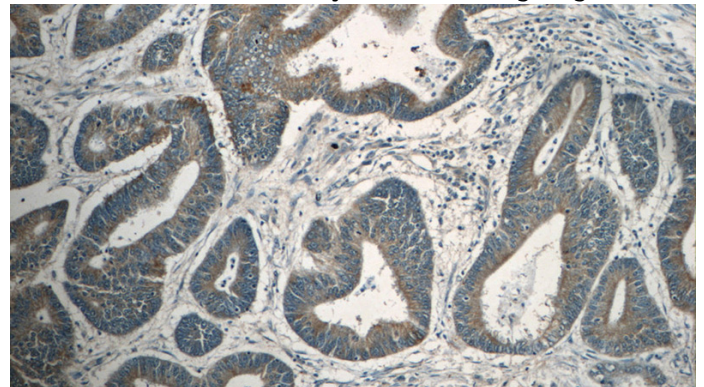
IHC: 1:20-1:200

IF: 1:20-1:200

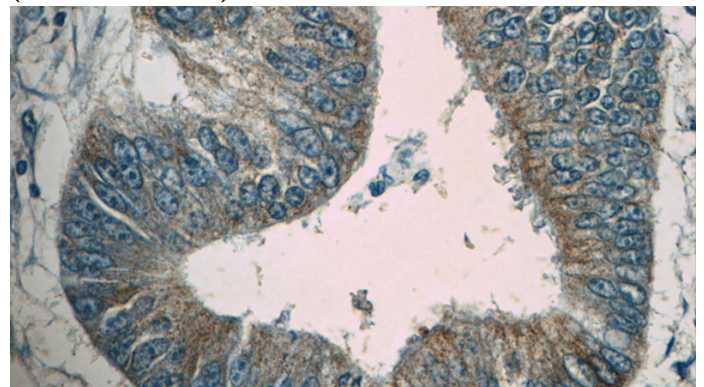
Validations



Immunofluorescent analysis of HepG2 cells, using MDK antibody Catalog No:112614 at 1:50 dilution and FITC-labeled donkey anti-rabbit IgG (green).



Immunohistochemistry of paraffin-embedded human colon cancer tissue slide using Catalog No:112614(MDK Antibody) at dilution of 1:50 (under 10x lens)



Immunohistochemistry of paraffin-embedded human colon cancer tissue slide using Catalog No:112614(MDK Antibody) at dilution of 1:50

Midkine antibody



Catalog Number: 112614

(under 40x lens)