

# Anti-TUBB antibody

Catalog Number: 142614

## Product name

Anti-TUBB antibody

## Specificity

Human TUBB

## Antibody description

Rabbit Polyclonal to Human TUBB

## Preparation

Produced in rabbits immunized with a synthetic peptide corresponding to the C-terminus of the Human TUBB, and purified by antigen affinity chromatography.

## Formulation

0.2 µm filtered solution in PBS

## Storage

This antibody can be stored at 2°C-8°C for one month without detectable loss of activity. Antibody products are stable for twelve months from date of receipt when stored at -20°C to -80°C.

Preservative-Free.

Sodium azide is recommended to avoid contamination (final concentration 0.05%-0.1%). It is toxic to cells and should be disposed of properly. Avoid repeated freeze-thaw cycles.

## Clonality

Polyclonal

## Ig Type

Rabbit IgG

## Applications

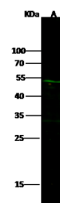
WB, ICC/IF, IF

## Dilutions

WB: 5-20 µg/ml

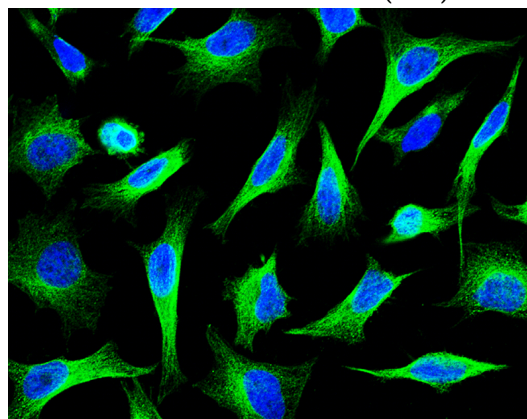
ICC/IF: 0.5-3 µg/mL

## Validations



Items	Lanes	A
Sample		Rat brain tissue lysate
Sample Volume (µg/lane)		30
Gel		13% SDS-PAGE reducing gel
Recommended Concentration		5-20 µg/ml
Secondary Antibody		DyLight 800-labeled Antibody to Rabbit IgG (H+L), at 1:5000 dilution. Developed using Odyssey imaging system.
Explanation		Predicted band size : 50 kDa Observed band size : 50 kDa

Human TUBB Western blot (WB) 14641



Human TUBB Immunofluorescence(IF) 14642