

# Human FAM3B (Fc Tag) recombinant protein



Catalog Number: 501614

## General Information

### Gene Name Synonym

Cytokine-like protein 2-21; Pancreatic-derived factor

### Protein Construction

A DNA sequence encoding the human FAM3B isoform B (P58499-1) (Met 1-Ser 235) was fused with the Fc region of human IgG1 at the C-terminus.

### Organism

Human

### Expression Host

Human Cells

## QC Testing

### Purity

> 95 % as determined by SDS-PAGE

### Endotoxin

< 1.0 EU per  $\mu\text{g}$  of the protein as determined by the LAL method

### Stability

Samples are stable for up to twelve months from date of receipt at  $-70^{\circ}\text{C}$

### Predicted N terminal

Glu 30

### Molecular Mass

The secreted recombinant human FAM3B/Fc is a

disulfide-linked homodimeric protein. The reduced monomer consists of 447 amino acids and has a predicted molecular mass of 50 kDa. The apparent molecular mass of rhFAM3B/Fc monomer is approximately 57 kDa in SDS-PAGE under reducing conditions.

### Formulation

Lyophilized from sterile PBS, pH 7.4

1. 5 % trehalose and mannitol are added as protectants before lyophilization.

2. Please contact us for any concerns or special requirements.

## Usage Guide

### Storage

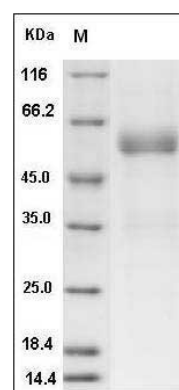
Store it under sterile conditions at  $-20^{\circ}\text{C}$  to  $-80^{\circ}\text{C}$ .

It is recommended that the protein be aliquoted for optimal storage. Avoid repeated freeze-thaw cycles.

### Reconstitution

Adding sterile water, prepare a stock solution of 0.25 mg/ml. Concentration is measured by UV-Vis.

### SDS-PAGE



Human FAM3B Protein (Fc Tag) SDS-PAGE