

FEM1A antibody

Catalog Number: 110614

Product name

FEM1A antibody

Specificity

human; other species not tested.

Antibody description

FEM1A Rabbit Polyclonal antibody. Positive WB detected in U-937 cells. Positive IHC detected in human skeletal muscle. Observed molecular weight by Western-blot: 74 kDa

Preparation

This antibody was obtained by immunization of FEM1A recombinant protein (Accession Number: NM_018708). Purification method: Antigen affinity purified.

Formulation

PBS with 0.02% sodium azide and 50% glycerol pH 7.3.

Storage

Store at -20°C. DO NOT ALIQUOT

Clonality

Polyclonal

Ig Type

Rabbit IgG

Applications

ELISA, WB, IHC

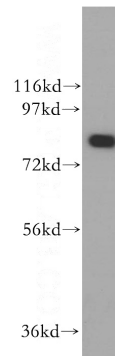
Dilutions

Recommended Dilution:

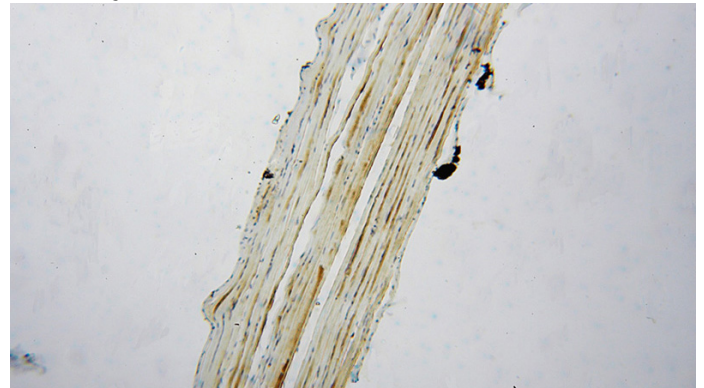
WB: 1:200-1:1000

IHC: 1:20-1:200

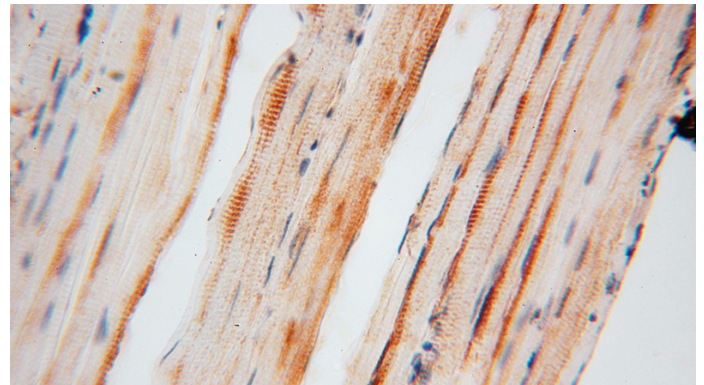
Validations



U-937 cells were subjected to SDS PAGE followed by western blot with Catalog No:110614(FEM1A antibody) at dilution of 1:300



Immunohistochemical of paraffin-embedded human skeletal muscle using Catalog No:110614(FEM1A antibody) at dilution of 1:50 (under 10x lens)



Immunohistochemical of paraffin-embedded human skeletal muscle using Catalog No:110614(FEM1A antibody) at dilution of 1:50 (under 40x lens)