

Eg5 antibody

Catalog Number: 110214

Product name

Eg5 antibody

IP: 1:500-1:5000

IHC: 1:20-1:200

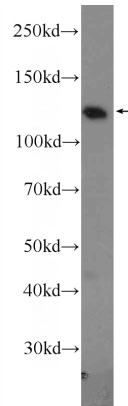
Specificity

Human; other species not tested.

Validations

Antibody description

Eg5 Rabbit Polyclonal antibody. Positive IHC detected in human lung cancer tissue, human prostate hyperplasia tissue. Positive IP detected in Raji cells. Positive WB detected in PC-13 cells, HEK-293 cells, MCF7 cells, Raji cells. Observed molecular weight by Western-blot: 120-130 kDa



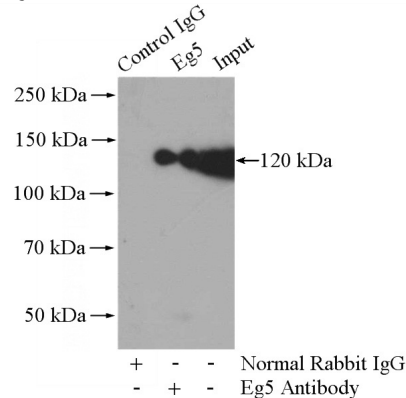
Preparation

This antibody was obtained by immunization of Eg5 recombinant protein (Accession Number: NM_004523). Purification method: Antigen Affinity purified.

PC-13 cells were subjected to SDS PAGE followed by western blot with Catalog No:110214(KIF11 Antibody) at dilution of 1:1000

Formulation

PBS with 0.02% sodium azide and 50% glycerol pH 7.3.



Storage

Store at -20°C. DO NOT ALIQUOT

IP Result of anti-KIF11 (IP:Catalog No:110214, 4ug; Detection:Catalog No:110214 1:1000) with Raji cells lysate 2000ug.

Clonality

Polyclonal

Ig Type

Rabbit IgG

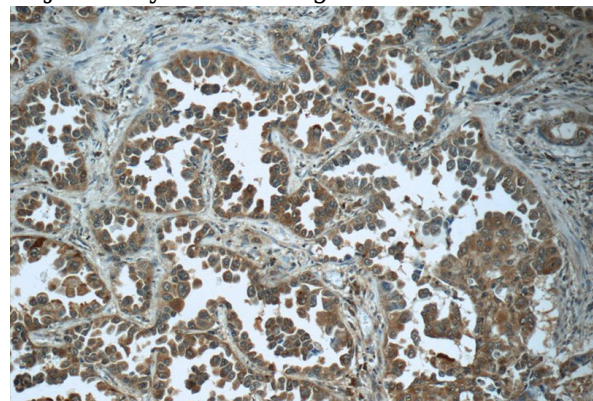
Applications

ELISA, WB, IHC, IP

Dilutions

Recommended Dilution:

WB: 1:500-1:5000

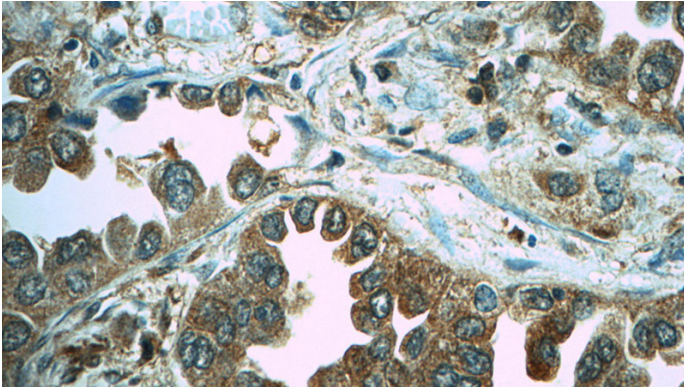


Immunohistochemistry of paraffin-embedded human lung cancer tissue slide using Catalog

Eg5 antibody

Catalog Number: 110214

No:110214(KIF11 Antibody) at dilution of 1:50
(under 10x lens)



Immunohistochemistry of paraffin-embedded
human lung cancer tissue slide using Catalog
No:110214(KIF11 Antibody) at dilution of 1:50
(under 40x lens)