

CPN1 antibody

Catalog Number: 109514

Product name

CPN1 antibody

IHC: 1:20-1:200

IF: 1:10-1:100

Specificity

Human, Mouse, Rat; other species not tested.

Antibody description

CPN1 Rabbit Polyclonal antibody. Positive WB detected in Raji cells, COLO 320 cells. Positive FC detected in HeLa cells. Positive IF detected in COLO 320 cells. Positive IHC detected in human liver cancer tissue. Observed molecular weight by Western-blot: 50kd

Preparation

This antibody was obtained by immunization of CPN1 recombinant protein (Accession Number: NM_001308). Purification method: Antigen affinity purified.

Formulation

PBS with 0.02% sodium azide and 50% glycerol pH 7.3.

Storage

Store at -20°C. DO NOT ALIQUOT

Clonality

Polyclonal

Ig Type

Rabbit IgG

Applications

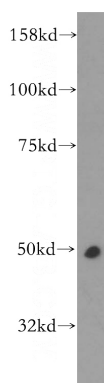
ELISA, WB, IHC, FC, IF

Dilutions

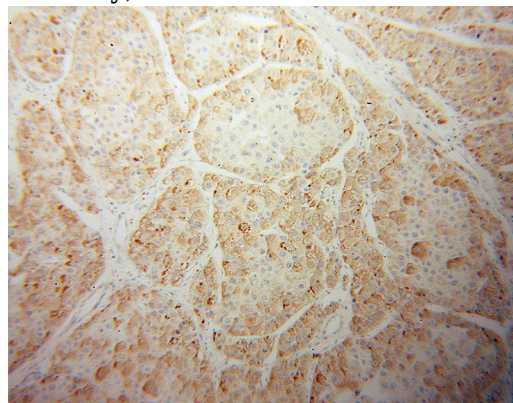
Recommended Dilution:

WB: 1:500-1:5000

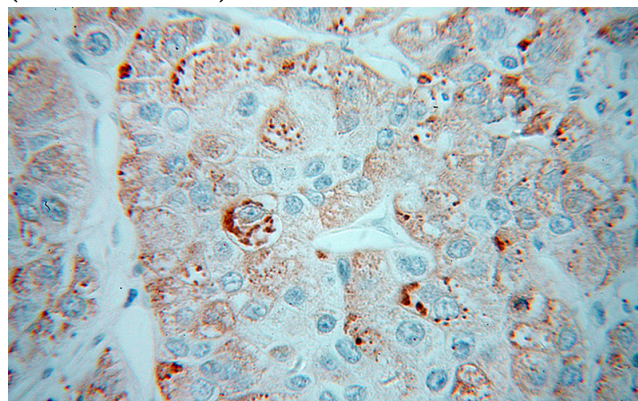
Validations



Raji cells were subjected to SDS PAGE followed by western blot with Catalog No:109514(CPN1 antibody) at dilution of 1:300



Immunohistochemical of paraffin-embedded human liver cancer using Catalog No:109514(CPN1 antibody) at dilution of 1:100 (under 10x lens)

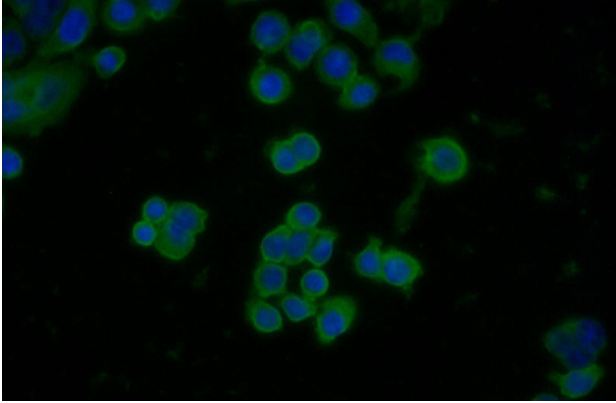



Immunohistochemical of paraffin-embedded

CPN1 antibody

Catalog Number: 109514

human liver cancer using Catalog No:109514(CPN1 antibody) at dilution of 1:100 (under 40x lens)



Immunofluorescent analysis of COLO 320 cells using Catalog No:109514(CPN1 Antibody) at dilution of 1:25 and Alexa Fluor 488-conjugated AffiniPure Goat Anti-Rabbit IgG(H+L) 

1X10⁶ HeLa cells were stained with 0.2ug CPN1 antibody (Catalog No:109514, red) and control antibody (blue). Fixed with 90% MeOH blocked with 3% BSA (30 min). Alexa Fluor 488-conjugated AffiniPure Goat Anti-Rabbit IgG(H+L) with dilution 1:1500.