

METAP2 antibody



Catalog Number: 112514

Product name

METAP2 antibody

IP: 1:200-1:1000

IHC: 1:20-1:200

Specificity

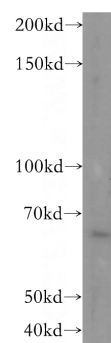
Human, Mouse, Rat; other species not tested.

IF: 1:50-1:500

Antibody description

METAP2 Rabbit Polyclonal antibody. Positive IF detected in HepG2 cells. Positive IHC detected in human testis tissue. Positive WB detected in HepG2 cells, MCF7 cells. Positive IP detected in MCF-7 cells. Observed molecular weight by Western-blot: 67 kDa

Validations



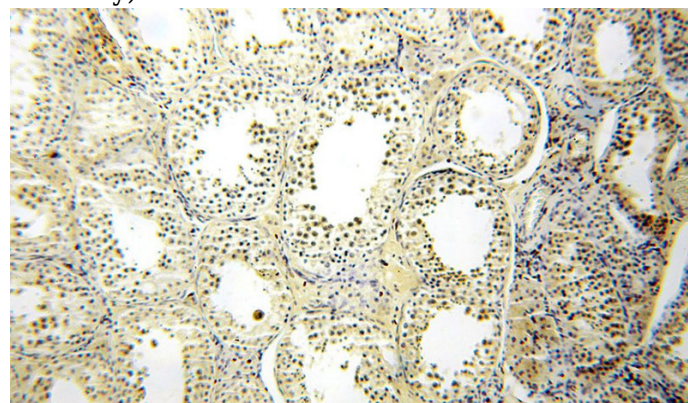
Preparation

This antibody was obtained by immunization of METAP2 recombinant protein (Accession Number: NM_006838). Purification method: Antigen affinity purified.

HepG2 cells were subjected to SDS PAGE followed by western blot with Catalog No:112514(METAP2 antibody) at dilution of 1:300

Formulation

PBS with 0.02% sodium azide and 50% glycerol pH 7.3.



Storage

Store at -20°C. DO NOT ALIQUOT

Clonality

Polyclonal

Ig Type

Rabbit IgG

Applications

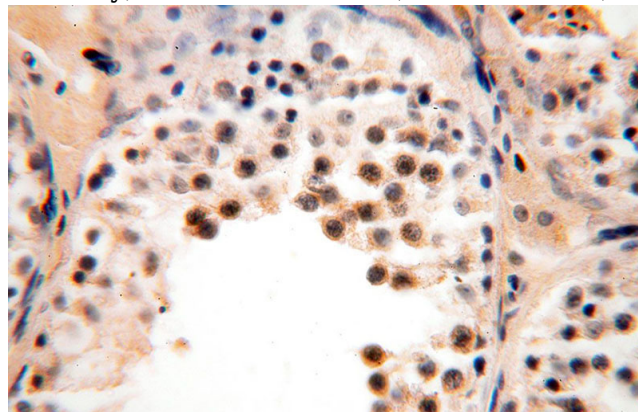
ELISA, WB, IHC, IP, IF

Dilutions

Recommended Dilution:

WB: 1:200-1:2000

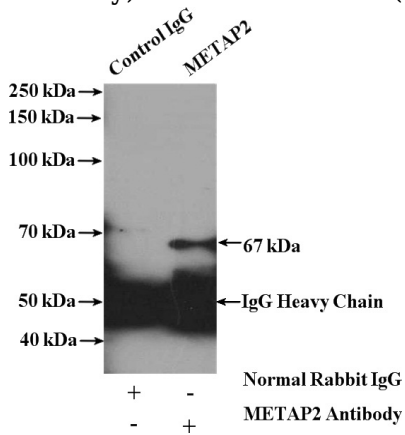
Immunohistochemical of paraffin-embedded human testis using Catalog No:112514(METAP2 antibody) at dilution of 1:50 (under 10x lens)



METAP2 antibody

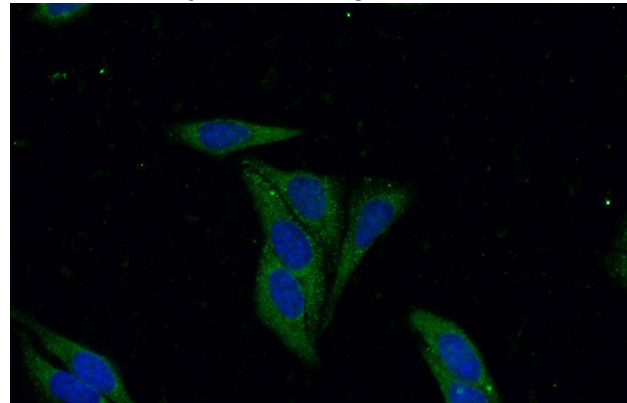
Catalog Number: 112514

Immunohistochemical of paraffin-embedded human testis using Catalog No:112514(METAP2 antibody) at dilution of 1:50 (under 40x lens)



IP Result of anti-METAP2 (IP:Catalog No:112514, 4ug; Detection:Catalog No:112514 1:300) with

MCF-7 cells lysate 3200ug.



Immunofluorescent analysis of (-20oc Ethanol) fixed HepG2 cells using Catalog No:112514(METAP2 Antibody) at dilution of 1:50 and Alexa Fluor 488-conjugated AffiniPure Goat Anti-Rabbit IgG(H+L)