

Human CD171 / N-CAML1 / L1CAM (His Tag) recombinant protein



Catalog Number: 502514

General Information

Protein Construction

A DNA sequence encoding the extracellular domain of human CD171 (NP_000416.1) (Met 1-Glu 1120) was fused with a polyhistidine tag at the C-terminus.

Organism

Human

Expression Host

Human Cells

QC Testing

Purity

> 85 % as determined by SDS-PAGE

Endotoxin

< 1.0 EU per μg of the protein as determined by the LAL method

Stability

Samples are stable for up to twelve months from date of receipt at -70°C

Predicted N terminal

Ile 20

Molecular Mass

The recombinant human CD171 consists of 1112 amino acids after removal of the signal peptide and predicts a molecular mass of 125 kDa. As a

result of glycosylation, the apparent molecular mass of rhCD171 is approximately 160-200 kDa band in SDS-PAGE under reducing conditions.

Formulation

Lyophilized from sterile PBS, pH 7.4

1. 5 % trehalose and mannitol are added as protectants before lyophilization.

2. Please contact us for any concerns or special requirements.

Usage Guide

Storage

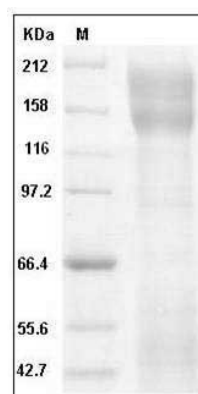
Store it under sterile conditions at -20°C to -80°C .

It is recommended that the protein be aliquoted for optimal storage. Avoid repeated freeze-thaw cycles.

Reconstitution

Adding sterile water, prepare a stock solution of 0.25 mg/ml. Concentration is measured by UV-Vis.

SDS-PAGE



Human CD171 / N-CAML1 / L1CAM Protein (His Tag) SDS-PAGE