

THUMPD3 antibody



Catalog Number: 116114

Product name

THUMPD3 antibody

IHC: 1:20-1:200

IF: 1:10-1:100

Specificity

human, mouse, rat; other species not tested.

Antibody description

THUMPD3 Rabbit Polyclonal antibody. Positive WB detected in HeLa cells, mouse kidney tissue. Positive IHC detected in human hepat°Cirrhosis. Positive IF detected in Hela. Observed molecular weight by Western-blot: 57kd

Preparation

This antibody was obtained by immunization of THUMPD3 recombinant protein (Accession Number: NM_015453). Purification method: Antigen affinity purified.

Formulation

PBS with 0.02% sodium azide and 50% glycerol pH 7.3.

Storage

Store at -20°C. DO NOT ALIQUOT

Clonality

Polyclonal

Ig Type

Rabbit IgG

Applications

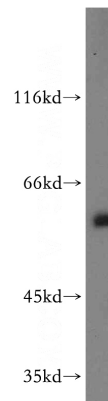
ELISA, WB, IHC, IF

Dilutions

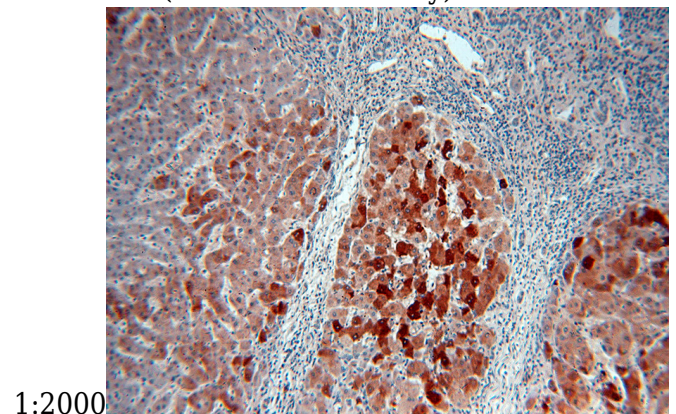
Recommended Dilution:

WB: 1:1000-1:10000

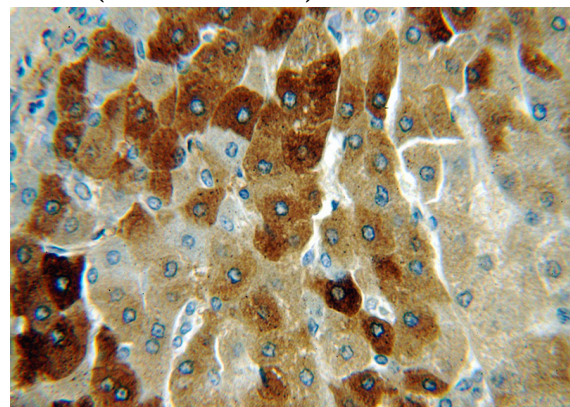
Validations



HeLa cells were subjected to SDS PAGE followed by western blot with Catalog No:116114(THUMPD3 antibody) at dilution of



Immunohistochemical of paraffin-embedded human hepatocirrhosis using Catalog No:116114(THUMPD3 antibody) at dilution of 1:100 (under 10x lens)

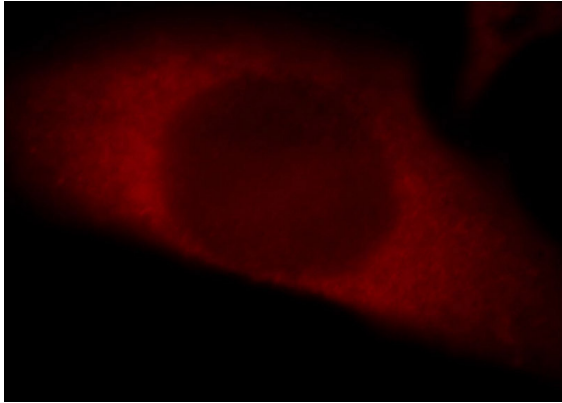


THUMPD3 antibody



Catalog Number: 116114

Immunohistochemical of paraffin-embedded human hepatocirrhosis using Catalog No:116114(THUMPD3 antibody) at dilution of 1:100 (under 40x lens)



Immunofluorescent analysis of Hela cells, using THUMPD3 antibody Catalog No:116114 at 1:25 dilution and Rhodamine-labeled goat anti-rabbit IgG (red).