

# Anti-BCL2 / Bcl-2 antibody



Catalog Number: 106114

## Product name

Anti-BCL2 / Bcl-2 antibody

## Specificity

Human Bcl-2

## Antibody description

Rabbit monoclonal to BCL2 / Bcl-2

## Preparation

This antibody was obtained from a rabbit immunized with purified, the synthetic peptide corresponding to the N-terminus of the Human Bcl-2.

## Formulation

0.2 µm filtered solution in PBS with 5% trehalose

## Storage

This antibody can be stored at 2°C-8°C for one month without detectable loss of activity. Antibody products are stable for twelve months from date of receipt when stored at -20°C to -80°C.

Preservative-Free.

Sodium azide is recommended to avoid contamination (final concentration 0.05%-0.1%). It

is toxic to cells and should be disposed of properly. Avoid repeated freeze-thaw cycles.

## Clonality

Monoclonal

## Ig Type

Rabbit IgG

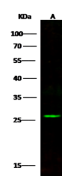
## Applications

WB

## Dilutions

WB: 10-15 µg/mL

## Validations



Items	Lanes	A
Sample (whole cell lysate)		Jurkat
Sample Volume (µg/lane)		30
Gel		13% SDS-PAGE reducing gel
Recommended Concentration		10-15 µg/ml
Secondary Antibody		DyLight 800-labeled Antibody To Rabbit IgG (H+L), at 1:5000 dilution.
		Developed using Odyssey imaging system
Explanation		Predicted band size: 26 kDa Observed band size: 26 kDa

Bcl-2 Antibody, Rabbit MAb, Western blot