

# STAU2 Polyclonal Antibody



Catalog Number: 164114

## Product name

STAU2 Polyclonal Antibody

## Specificity

Human, Mouse, Rat

## Antibody description

Polyclonal antibody to STAU2

## Preparation

Antigen: A synthetic peptide corresponding to a sequence within amino acids 300-400 of human STAU2 (NP\_001157852.1).

## Formulation

PBS with 0.02% sodium azide, 50% glycerol, pH7.3.

## Storage

Store at -20°C. Avoid freeze / thaw cycles.

## Clonality

Polyclonal

## Ig Type

Rabbit IgG

## Applications

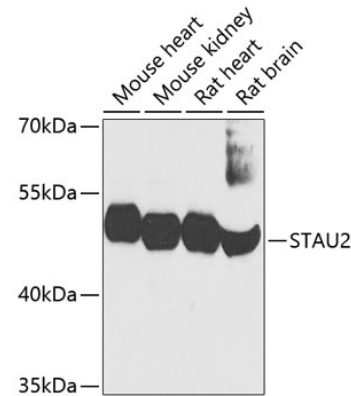
WB, IF

## Dilutions

WB 1:500 - 1:2000

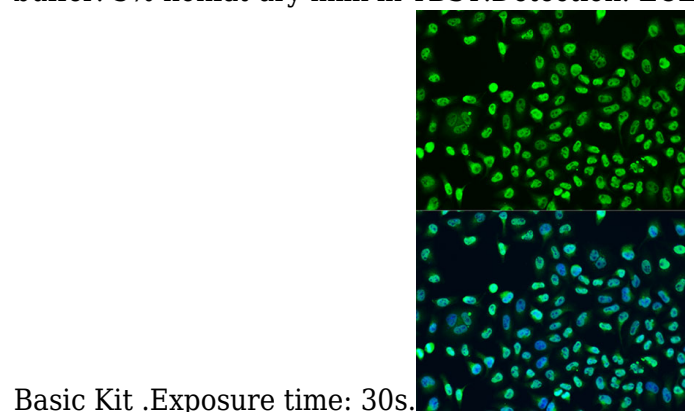
IF 1:50 - 1:200

## Validations



Western blot - STAU2 Polyclonal Antibody

Western blot analysis of extracts of various cell lines, using STAU2 antibody at 1:1000 dilution. Secondary antibody: HRP Goat Anti-Rabbit IgG (H+L) at 1:10000 dilution. Lysates/proteins: 25ug per lane. Blocking buffer: 3% nonfat dry milk in TBST. Detection: ECL



Basic Kit .Exposure time: 30s.

Immunofluorescence - STAU2 Polyclonal Antibody

Immunofluorescence analysis of U2OS cells using STAU2 antibody at dilution of 1:100. Blue: DAPI for nuclear staining.