

General Information

Gene Name Synonym

Protein C10; Small-inducible cytokine A6;
CCL6(22-95); CCL6(23-95)

Protein Construction

A DNA sequence encoding the mouse CCL6 (P27784) (Met 1-Ala 116) was fused with a polyhistidine tag at the C-terminus.

Organism

Mouse

Expression Host

Human Cells

QC Testing

Purity

> 90 % as determined by SDS-PAGE

Endotoxin

< 1.0 EU per μg of the protein as determined by the LAL method

Stability

Samples are stable for up to twelve months from date of receipt at -70°C

Predicted N terminal

Gly 22

Molecular Mass

The recombinant mouse CCL6 consists of 106 amino acids and has a predicted molecular mass of 12 kDa. In SDS-PAGE under reducing conditions, the apparent molecular mass of rmCCL6 is approximately 14 kDa.

Formulation

Lyophilized from sterile PBS, pH 7.4

1. 5 % trehalose and mannitol are added as protectants before lyophilization.
2. Please contact us for any concerns or special requirements.

Usage Guide

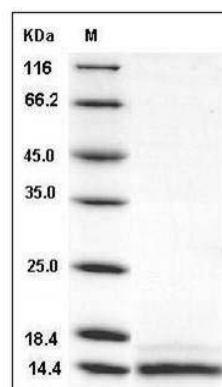
Storage

Store it under sterile conditions at -20°C to -80°C . It is recommended that the protein be aliquoted for optimal storage. Avoid repeated freeze-thaw cycles.

Reconstitution

Adding sterile water, prepare a stock solution of 0.25 mg/ml. Concentration is measured by UV-Vis.

SDS-PAGE



Mouse CCL6 / C-C motif ligand 6 Protein (His Tag)
SDS-PAGE