

Human CLEC4E/CLECSF9/MINCLE/UNQ218 (Fc tag) recombinant protein



Catalog Number: 519814

General Information

Gene Name Synonym

C-Type Lectin Domain Family 4 Member E; C-Type Lectin Superfamily Member 9; Macrophage-Inducible C-Type Lectin; CLEC4E; CLECSF9; MINCLE

Protein Construction

A DNA sequence encoding the Human CLEC4E/CLECSF9/MINCLE/UNQ218 Arg41-Leu219 is expressed with a Fc tag at the N-terminus.

Organism

Human

Expression Host

Human Cells

QC Testing

Purity

>95% as determined by SDS-PAGE.

Endotoxin

<1.0 EU per μg protein as determined by the LAL method.

Stability

Store for up to 12 months at -20°C to -80°C as lyophilized powder. Aliquots of reconstituted samples are stable at $< -20^{\circ}\text{C}$ for 3 months.

Formulation

Lyophilized from a $0.2\ \mu\text{m}$ filtered solution of PBS, pH7.4.

Usage Guide

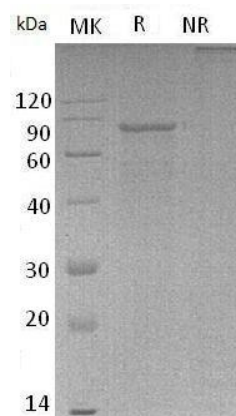
Storage

Lyophilized protein should be stored at $< -20^{\circ}\text{C}$, though stable at room temperature for 3 weeks. Reconstituted protein solution can be stored at $4-7^{\circ}\text{C}$ for 2-7 days.

Reconstitution

Always centrifuge tubes before opening. Do not mix by vortex or pipetting. It is not recommended to reconstitute to a concentration less than $100\ \mu\text{g}/\text{ml}$. Dissolve the lyophilized protein in ddH₂O. Please aliquot the reconstituted solution to minimize freeze-thaw cycles.

SDS-PAGE



Human CLEC4E/CLECSF9/MINCLE/UNQ218 (Fc tag) recombinant protein