

Human SIT1/SIT (His tag) recombinant protein



Catalog Number: 518814

General Information

Gene Name Synonym

Signaling Threshold-Regulating Transmembrane Adapter 1, SHP2-Interacting Transmembrane Adapter Protein, Suppression-Inducing Transmembrane Adapter 1, gp30/40, SIT1, SIT

Protein Construction

A DNA sequence encoding the Human SIT1/SIT Gln65-Ser196 is expressed with a 6His tag at the N-terminus.

Organism

Human

Expression Host

E. coli

QC Testing

Purity

>95% as determined by SDS-PAGE.

Endotoxin

<1.0 EU per μg protein as determined by the LAL method.

Stability

Store for up to 12 months at -20°C to -80°C as lyophilized powder. Aliquots of reconstituted samples are stable at $< -20^{\circ}\text{C}$ for 3 months.

Formulation

Lyophilized from a $0.2\ \mu\text{m}$ filtered solution of 20mM Tris, 250mM NaCl, 2mM EDTA, pH 8.0 .

Usage Guide

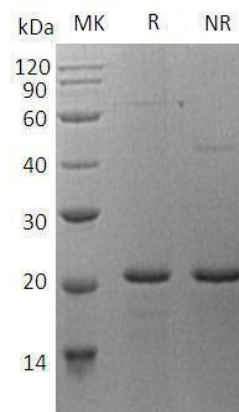
Storage

Lyophilized protein should be stored at $<-20^{\circ}\text{C}$, though stable at room temperature for 3 weeks. Reconstituted protein solution can be stored at $4-7^{\circ}\text{C}$ for 2-7 days.

Reconstitution

Always centrifuge tubes before opening. Do not mix by vortex or pipetting. It is not recommended to reconstitute to a concentration less than $100\mu\text{g/ml}$. Dissolve the lyophilized protein in ddH₂O. Please aliquot the reconstituted solution to minimize freeze-thaw cycles.

SDS-PAGE



Human SIT1/SIT (His tag) recombinant protein