

# RPL13A antibody



Catalog Number: 114814

## Product name

RPL13A antibody

## Specificity

Human, Mouse; other species not tested.

## Antibody description

RPL13A Rabbit Polyclonal antibody. Positive WB detected in HeLa cells, A549 cells, Jurkat cells, RAW264.7 cells. Observed molecular weight by Western-blot: 25-28kd

## Preparation

This antibody was obtained by immunization of RPL13A recombinant protein (Accession Number: NM\_012423). Purification method: Antigen affinity purified.

## Formulation

PBS with 0.02% sodium azide and 50% glycerol pH 7.3.

## Storage

Store at -20°C. DO NOT ALIQUOT

## Clonality

Polyclonal

## Ig Type

Rabbit IgG

## Applications

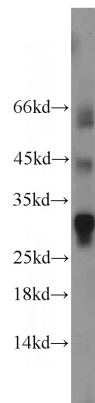
ELISA, WB

## Dilutions

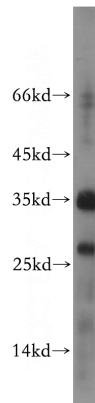
Recommended Dilution:

WB: 1:200-1:2000

## Validations



RAW264.7 cells were subjected to SDS PAGE followed by western blot with Catalog No:114814(RPL13A antibody) at dilution of 1:600



HeLa cells were subjected to SDS PAGE followed by western blot with Catalog No:114814(RPL13A antibody) at dilution of 1:400