

c-Met antibody

Catalog Number: 109414

Product name

c-Met antibody

Specificity

Human, Mouse, Rat; other species not tested.

Antibody description

c-Met Rabbit Polyclonal antibody. Positive WB detected in HeLa cells. Positive FC detected in HeLa cells. Positive IHC detected in human breast cancer tissue, human colon tissue. Observed molecular weight by Western-blot: 140 kDa

Preparation

This antibody was obtained by immunization of Peptide (Accession Number: NM_000245). Purification method: Antigen affinity purified.

Formulation

PBS with 0.02% sodium azide and 50% glycerol pH 7.3.

Storage

Store at -20°C. DO NOT ALIQUOT

Clonality

Polyclonal

Ig Type

Rabbit IgG

Applications

ELISA, WB, IHC, FC

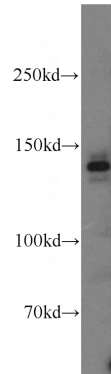
Dilutions

Recommended Dilution:

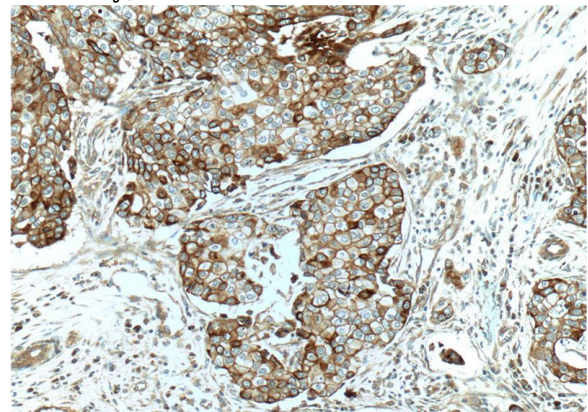
WB: 1:200-1:2000

IHC: 1:20-1:200

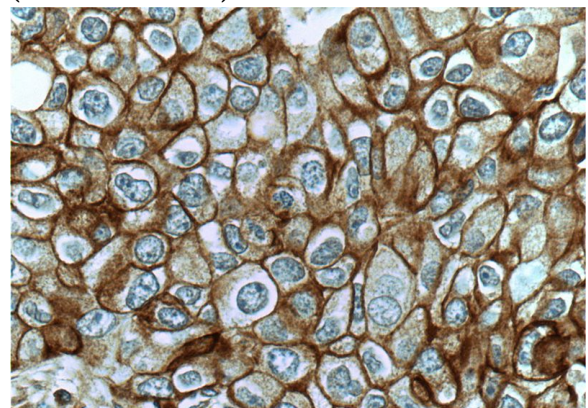
Validations



HeLa cells were subjected to SDS PAGE followed by western blot with Catalog No:109414(MET antibody) at dilution of 1:300



Immunohistochemistry of paraffin-embedded human breast cancer tissue slide using Catalog No:109414(MET Antibody) at dilution of 1:50 (under 10x lens)

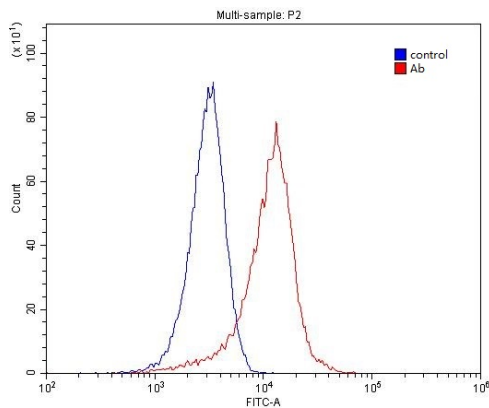


Immunohistochemistry of paraffin-embedded human breast cancer tissue slide using Catalog No:109414(MET Antibody) at dilution of 1:50 (under 40x lens)

c-Met antibody



Catalog Number: 109414



1X10⁶ HeLa cells were stained with 0.2ug MET antibody (Catalog No:109414, red) and control antibody (blue). Fixed with 4% PFA blocked with 3% BSA (30 min). Alexa Fluor 488-conjugated AffiniPure Goat Anti-Rabbit IgG(H+L) with dilution 1:1500.