

Anti-SFTPA2 antibody

Catalog Number: 176414

Product name

Anti-SFTPA2 antibody

Specificity

Human, Mouse, Rat

Antibody description

Rabbit polyclonal antibody to SFTPA2

Preparation

This antigen of this antibody was the antiserum was produced against synthesized peptide derived from the internal region of human sftpa1/2. aa range:141-190

Formulation

Liquid, Liquid in PBS containing 50% glycerol, 0.5% BSA and 0.02% sodium azide.

Storage

Store at +4°C after thawing. Aliquot store at -20°C or -80°C. Avoid repeated freeze / thaw cycles.

Clonality

Polyclonal

Ig Type

Rabbit IgG

Applications

WB, IHC-P

Dilutions

WB: 1:500-1:2000

IHC-P: 1:100-300

Validations

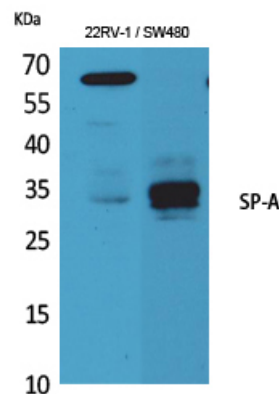
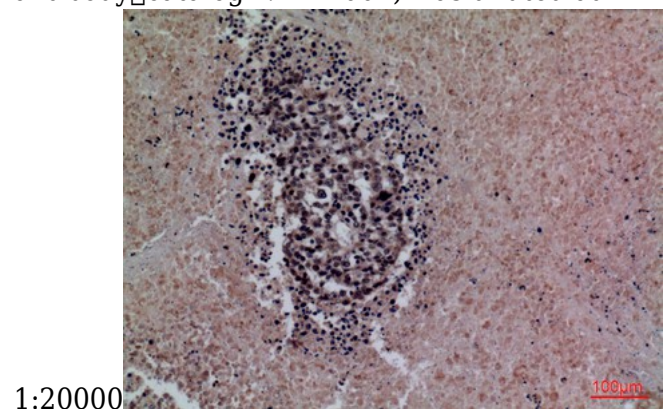


Fig1.; Western Blot analysis of K562, mouse lung cells using SP-A Polyclonal Antibody.. Secondary antibody (catalog#: HA1001) was diluted at



1:20000

Fig2.; Immunohistochemical analysis of paraffin-embedded human-lung-cancer, antibody was diluted at 1:100