

# WDFY4 Polyclonal Antibody



Catalog Number: 164414

## Product name

WDFY4 Polyclonal Antibody

## Specificity

Human

## Antibody description

Polyclonal antibody to WDFY4

## Preparation

Antigen: Recombinant protein of human WDFY4

## Formulation

PBS with 0.02% sodium azide, 50% glycerol, pH7.3.

## Storage

Store at -20°C. Avoid freeze / thaw cycles.

## Clonality

Polyclonal

## Ig Type

Rabbit IgG

## Applications

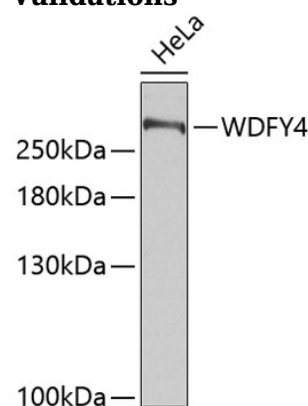
WB, IHC

## Dilutions

WB 1:500 - 1:1000

IHC 1:50 - 1:100

## Validations



Western blot - WDFY4 Polyclonal Antibody

Western blot analysis of extracts of HeLa cells, using WDFY4 antibody. Secondary antibody: HRP Goat Anti-Rabbit IgG (H+L) at 1:10000 dilution. Lysates/proteins: 25ug per lane. Blocking buffer: 3% nonfat dry milk in TBST.