

HLA class I (HLA-A) antibody



Catalog Number: 111414

Product name

HLA class I (HLA-A) antibody

WB: 1:500-1:5000

IP: 1:200-1:2000

Specificity

Human; other species not tested.

IHC: 1:20-1:200

IF: 1:10-1:100

Antibody description

HLA class I (HLA-A) Rabbit Polyclonal antibody. Positive IP detected in HepG2 cells. Positive WB detected in HepG2 cells, HEK-293 cells, HeLa cells. Positive FC detected in HepG2 cells. Positive IF detected in HepG2 cells. Positive IHC detected in human stomach cancer tissue. Observed molecular weight by Western-blot: 44 kDa

Preparation

This antibody was obtained by immunization of HLA class I (HLA-A) recombinant protein (Accession Number: NM_001242758). Purification method: Antigen affinity purified.

Formulation

PBS with 0.02% sodium azide and 50% glycerol pH 7.3.

Storage

Store at -20°C. DO NOT ALIQUOT

Clonality

Polyclonal

Ig Type

Rabbit IgG

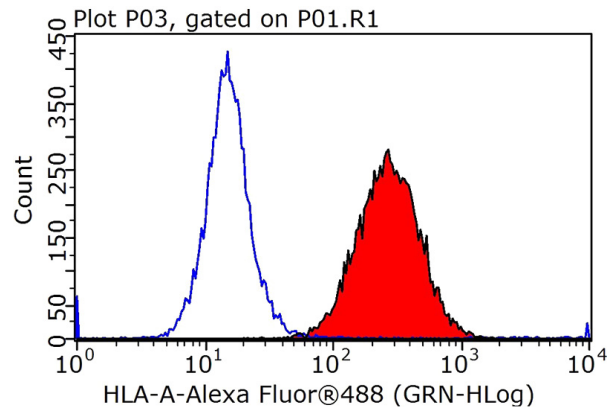
Applications

ELISA, WB, IHC, IF, IP, FC

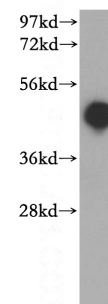
Dilutions

Recommended Dilution:

Validations



1X10⁶ HepG2 cells were stained with 0.2ug HLA class I (HLA-A) antibody (Catalog No:111414, red) and control antibody (blue). Fixed with 4% PFA blocked with 3% BSA (30 min). Alexa Fluor 488-conjugated AffiniPure Goat Anti-Rabbit IgG(H+L)

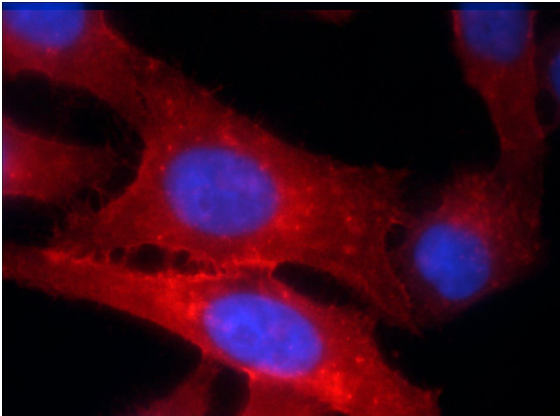


with dilution 1:200.

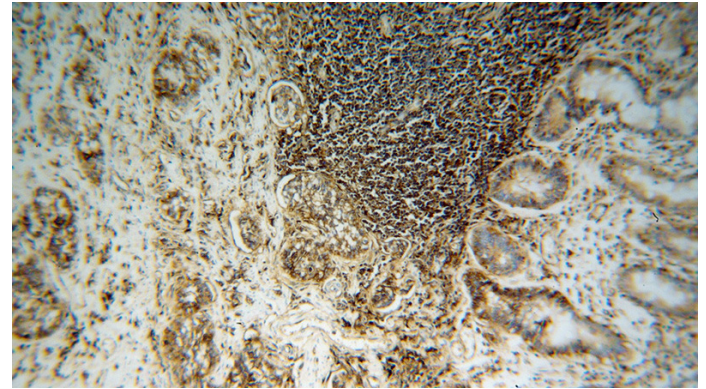
HepG2 cells were subjected to SDS PAGE followed by western blot with Catalog No:111414(HLA class I (HLA-A) antibody) at dilution of 1:500

HLA class I (HLA-A) antibody

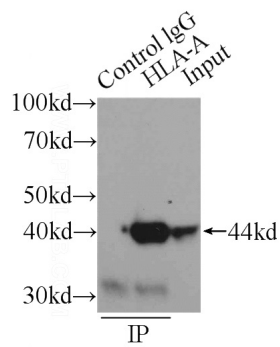
Catalog Number: 111414



Immunofluorescent analysis of HepG2 cells using Catalog No:111414(HLA class I (HLA-A) Antibody) at dilution of 1:25 and Rhodamine-Goat anti-

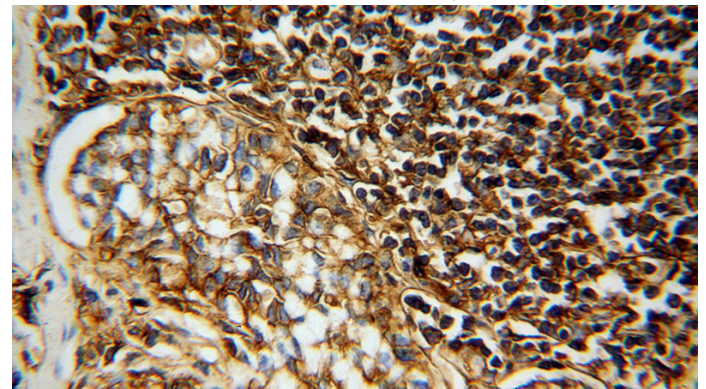


Immunohistochemical of paraffin-embedded human stomach cancer using Catalog No:111414(HLA class I (HLA-A) antibody) at dilution of 1:100 (under 10x lens)



Rabbit IgG

IP Result of anti-HLA class I (HLA-A) (IP:Catalog No:111414, 3ug; Detection:Catalog No:111414 1:500) with HepG2 cells lysate 1720ug.



Immunohistochemical of paraffin-embedded human stomach cancer using Catalog No:111414(HLA class I (HLA-A) antibody) at dilution of 1:100 (under 40x lens)