

# TRAF3 Polyclonal Antibody



Catalog Number: 164014

## Product name

TRAF3 Polyclonal Antibody

## Specificity

Human, Mouse, Rat

## Antibody description

Polyclonal antibody to TRAF3

## Preparation

Antigen: A synthetic peptide of human TRAF3

## Formulation

PBS with 0.02% sodium azide, 50% glycerol, pH7.3.

## Storage

Store at -20°C. Avoid freeze / thaw cycles.

## Clonality

Polyclonal

## Ig Type

Rabbit IgG

## Applications

WB, IHC, IF, IP

## Dilutions

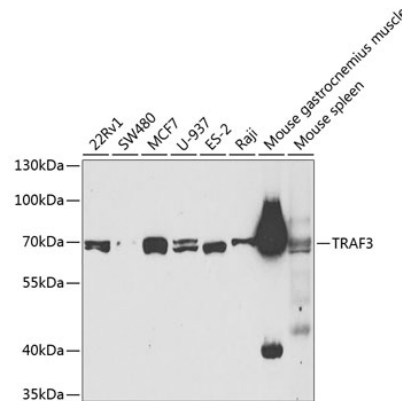
WB 1:200 - 1:1000

IHC 1:50 - 1:200

IF 1:50 - 1:200

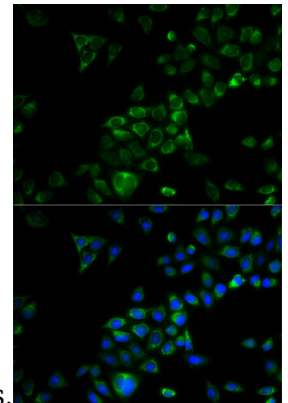
IP 1:50 - 1:100

## Validations



Western blot - TRAF3 Polyclonal Antibody

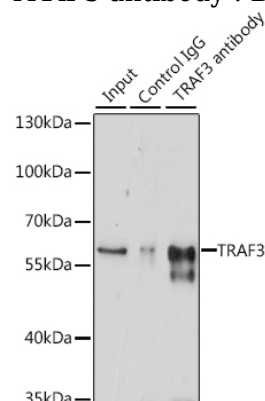
Western blot analysis of extracts of various cell lines, using TRAF3 antibody at 1:400 dilution. Secondary antibody: HRP Goat Anti-Rabbit IgG (H+L) at 1:10000 dilution. Lysates/proteins: 25ug per lane. Blocking buffer: 3% nonfat dry milk in TBST. Detection: ECL



Basic Kit .Exposure time: 90s.

Immunofluorescence - TRAF3 Polyclonal Antibody

Immunofluorescence analysis of HeLa cells using TRAF3 antibody . Blue: DAPI for nuclear staining.



Immunoprecipitation - TRAF3 Polyclonal Antibody

# TRAF3 Polyclonal Antibody



Catalog Number: 164014

---

Immunoprecipitation analysis of 200ug extracts of 293T cells using 3ug TRAF3 antibody . Western blot was performed from the immunoprecipitate using TRAF3 antibody at a dilution of 1:1000.