

# KIF3C antibody

Catalog Number: 112014

## Product name

KIF3C antibody

IP: 1:200-1:2000

IHC: 1:20-1:200

## Specificity

Human, Mouse, Rat; other species not tested.

## Antibody description

KIF3C Rabbit Polyclonal antibody. Positive IHC detected in human gliomas tissue. Positive IP detected in mouse brain tissue. Positive WB detected in Y79 cells, HeLa cells, mouse brain tissue. Observed molecular weight by Western-blot: 100 kDa

## Preparation

This antibody was obtained by immunization of KIF3C recombinant protein (Accession Number: NM\_002254). Purification method: Antigen affinity purified.

## Formulation

PBS with 0.02% sodium azide and 50% glycerol pH 7.3.

## Storage

Store at -20°C. DO NOT ALIQUOT

## Clonality

Polyclonal

## Ig Type

Rabbit IgG

## Applications

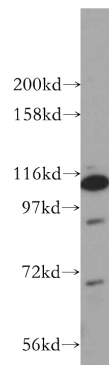
ELISA, WB, IHC, IP

## Dilutions

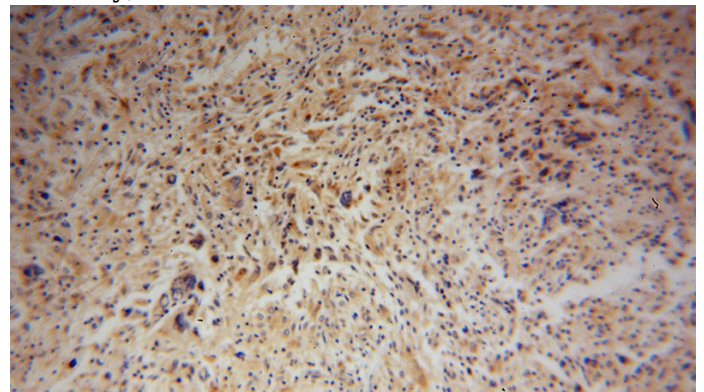
Recommended Dilution:

WB: 1:500-1:5000

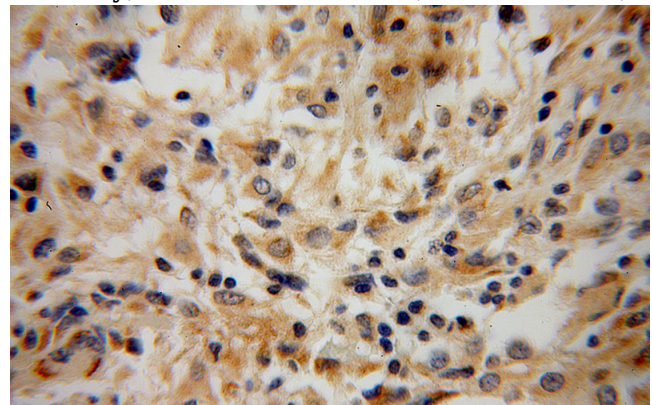
## Validations



Y79 cells were subjected to SDS PAGE followed by western blot with Catalog No:112014(KIF3C antibody) at dilution of 1:800



Immunohistochemical of paraffin-embedded human gliomas using Catalog No:112014(KIF3C antibody) at dilution of 1:100 (under 10x lens)



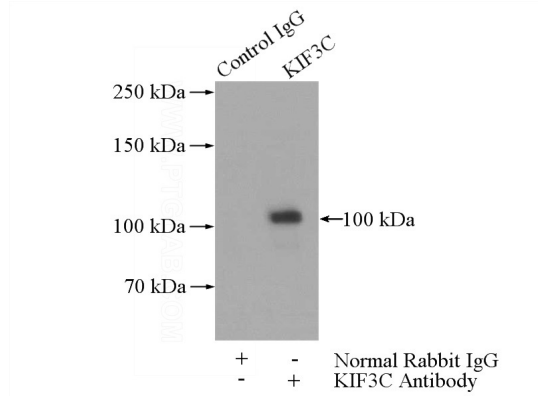
Immunohistochemical of paraffin-embedded human gliomas using Catalog No:112014(KIF3C

# KIF3C antibody

Catalog Number: 112014

---

antibody) at dilution of 1:100 (under 40x lens)



IP Result of anti-KIF3C (IP:Catalog No:112014, 4ug; Detection:Catalog No:112014 1:500) with mouse brain tissue lysate 3440ug.