

Anti-Phospho-AKT (Thr450) Rabbit antibody



Catalog Number: 166704

Product name

Anti-Phospho-AKT (Thr450) Rabbit antibody

Specificity

Human, Mouse, Rat

Antibody description

Phospho-AKT (Thr450) Rabbit polyclonal antibody

Preparation

Antigen: Peptide sequence around phosphorylation site of threonine 450 (T-I-T(p)-P-P) derived from Human AKT1.

Formulation

Supplied at 1.0mg/mL in phosphate buffered saline (without Mg²⁺ and Ca²⁺), pH 7.4, 150mM NaCl, 0.02% sodium azide and 50% glycerol.

Storage

Store at 4°C short term. Store at -20°C long term. Avoid freeze / thaw cycle.

Clonality

Polyclonal

Ig Type

Rabbit IgG

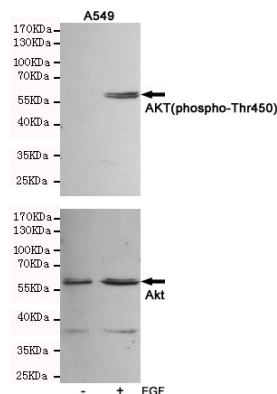
Applications

WB, IHC-P, ICC/IF

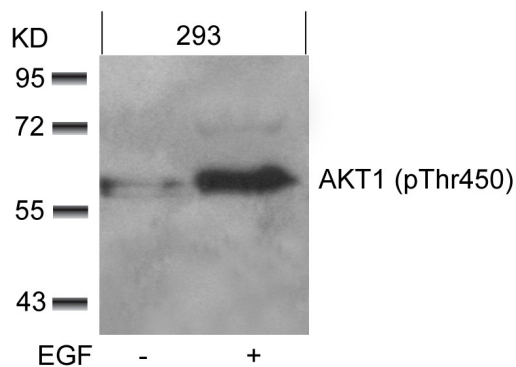
Dilutions

WB:1/500-1/1000 ICC:1/100-1/200 IHC:1/50-1/100

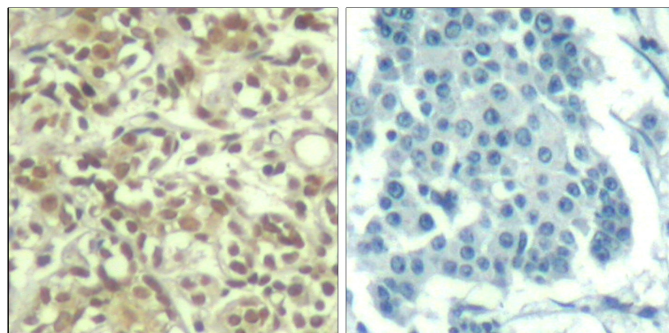
Validations



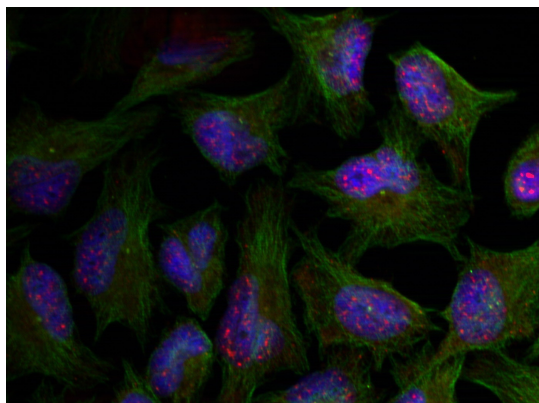
Western blot analysis of extracts from A549 cells, untreated or treated with EGF(10ng/ml,10min), using AKT (phospho-Thr450) Rabbit pAb (166704,1:500 diluted,upper) and AKT(pan) Mouse mAb (200323,lower).



Western blot analysis of extracts from 293 cells untreated or treated with EGF using AKT1 (phospho-Thr450) Antibody .



Immunohistochemical analysis of paraffin-embedded human breast carcinoma tissue using AKT1 (Phospho-Thr450) Antibody (left) or the same antibody preincubated with blocking peptide



Immunofluorescence staining of methanol-fixed HeLa cells using AKT1 (phospho-Thr450) Antibody

(right).