

Cynomolgus EphB6/Eph Receptor B6 (Fc Tag) recombinant protein



Catalog Number: 504704

General Information

Protein Construction

A DNA sequence encoding the cynomolgus EPHB6 (Met1-Ser591) was expressed, fused with the Fc region of human IgG1 at the C-terminus.

Organism

Cynomolgus

Expression Host

Human Cells

QC Testing

Activity

1. Measured by its ability to bind human EFNB1-His (Cat:501410) in a functional ELISA.
2. Immobilized EFNB2-His (Cat:503701) at 10 µg/ml (100 µl/well) can bind Cynomolgus EPHB6-Fc, The EC₅₀ of Cynomolgus EPHB6-Fc is 20.6-48 ng/ml.

Purity

> 85 % as determined by SDS-PAGE

Endotoxin

< 1.0 EU per µg of the protein as determined by the LAL method

Stability

Samples are stable for up to twelve months from date of receipt at -70°C

Predicted N terminal

Leu 32

Molecular Mass

The recombinant cynomolgus EPHB6 is a disulfide-linked homodimer. The reduced monomer comprises 801 amino acids and has a calculated molecular mass of 86.9 KDa. The apparent molecular mass of the protein is approximately 97 KDa respectively in SDS-PAGE.

Formulation

- Lyophilized from sterile PBS, pH 7.4
1. 5 % trehalose and mannitol are added as protectants before lyophilization.
 2. Please contact us for any concerns or special requirements.

Usage Guide

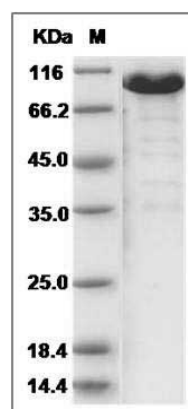
Storage

Store it under sterile conditions at -20°C to -80°C. It is recommended that the protein be aliquoted for optimal storage. Avoid repeated freeze-thaw cycles.

Reconstitution

Adding sterile water, prepare a stock solution of 0.25 mg/ml. Concentration is measured by UV-Vis.

SDS-PAGE



Cynomolgus EphB6 / EphB6 Protein (Fc Tag) SDS-PAGE