

# MMP26 antibody



Catalog Number: 112704

## Product name

MMP26 antibody

IHC: 1:20-1:200

IF: 1:20-1:200

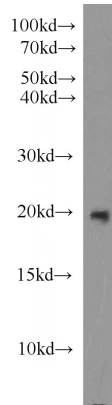
## Specificity

Human; other species not tested.

## Validations

## Antibody description

MMP26 Rabbit Polyclonal antibody. Positive IHC detected in human prostate cancer tissue. Positive IF detected in SKOV-3 cells. Positive WB detected in SKOV-3 cells, HEK-293 cells, human placenta tissue. Observed molecular weight by Western-blot: 20 kDa



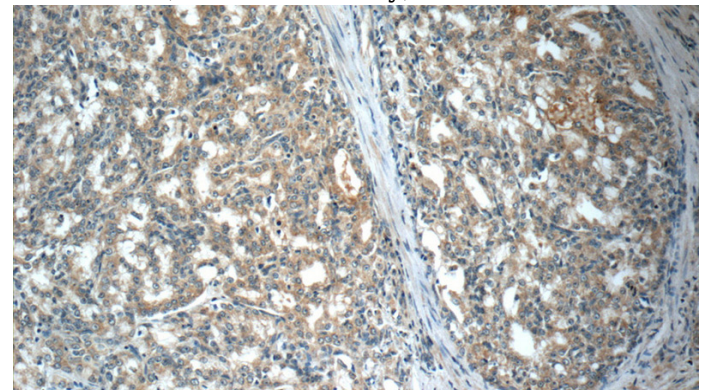
## Preparation

This antibody was obtained by immunization of MMP26 recombinant protein (Accession Number: NM\_021801). Purification method: Antigen affinity purified.

SKOV-3 cells were subjected to SDS PAGE followed by western blot with Catalog No:112704(MMP26 antibody) at dilution of 1:1000

## Formulation

PBS with 0.1% sodium azide and 50% glycerol pH 7.3.



## Storage

Store at -20°C. DO NOT ALIQUOT

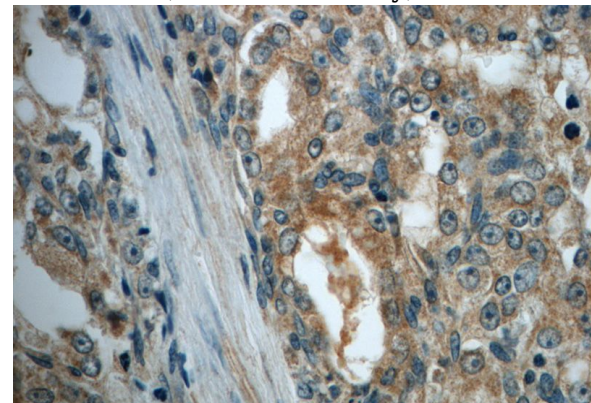
## Clonality

Polyclonal

Immunohistochemistry of paraffin-embedded human prostate cancer slide using Catalog No:112704(MMP26 Antibody) at dilution of 1:50

## Ig Type

Rabbit IgG



## Applications

ELISA, WB, IHC, IF

## Dilutions

Recommended Dilution:

WB: 1:500-1:5000

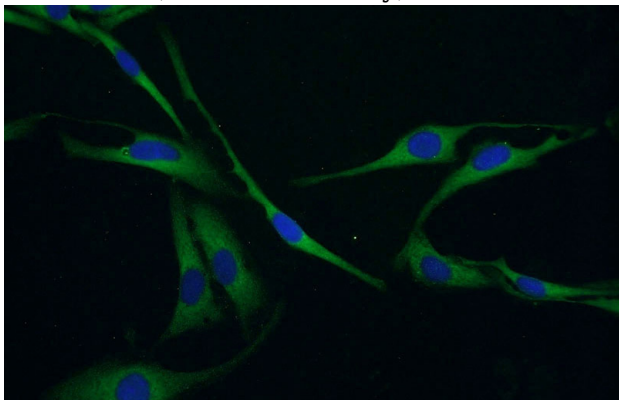
Immunohistochemistry of paraffin-embedded human prostate cancer slide using Catalog

# MMP26 antibody

Catalog Number: 112704

---

No:112704(MMP26 Antibody) at dilution of 1:50



Immunofluorescent analysis of SKOV-3 cells using Catalog No:112704(MMP26 Antibody) at dilution of 1:50 and Alexa Fluor 488-conjugated AffiniPure Goat Anti-Rabbit IgG(H+L)