

HSPG2-Specific antibody



Catalog Number: 111704

Product name

HSPG2-Specific antibody

Specificity

Human, Mouse, Rat; other species not tested.

Antibody description

HSPG2-Specific Rabbit Polyclonal antibody.
Positive WB detected in COLO 320 cells. Observed molecular weight by Western-blot: 469 kDa

Preparation

This antibody was obtained by immunization of Peptide (Accession Number: NM_005529).
Purification method: Antigen affinity purified.

Formulation

PBS with 0.02% sodium azide and 50% glycerol pH 7.3.

Storage

Store at -20°C. DO NOT ALIQUOT

Clonality

Polyclonal

Ig Type

Rabbit IgG

Applications

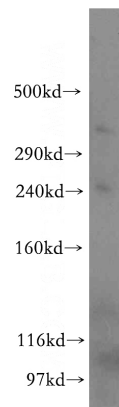
ELISA, WB

Dilutions

Recommended Dilution:

WB: 1:200-1:1000

Validations



COLO 320 cells were subjected to SDS PAGE followed by western blot with Catalog No:111704(HSPG2-Specific antibody) at dilution of 1:300