

SLC16A12 antibody



Catalog Number: 115304

Product name

SLC16A12 antibody

Specificity

Human, Mouse, Rat; other species not tested.

Antibody description

SLC16A12 Rabbit Polyclonal antibody. Positive IHC detected in human testis tissue. Positive WB detected in mouse kidney tissue. Observed molecular weight by Western-blot: 53kd

Preparation

This antibody was obtained by immunization of Peptide (Accession Number: NM_213606). Purification method: Antigen affinity purified.

Formulation

PBS with 0.02% sodium azide and 50% glycerol pH 7.3.

Storage

Store at -20°C. DO NOT ALIQUOT

Clonality

Polyclonal

Ig Type

Rabbit IgG

Applications

ELISA, WB, IHC

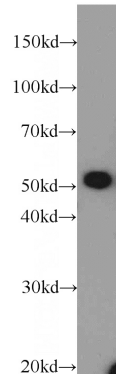
Dilutions

Recommended Dilution:

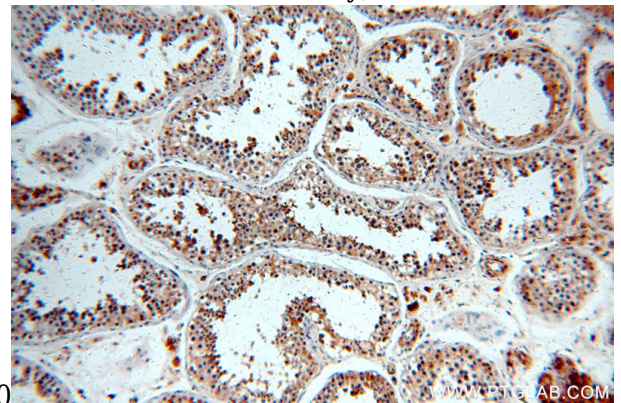
WB: 1:200-1:2000

IHC: 1:20-1:200

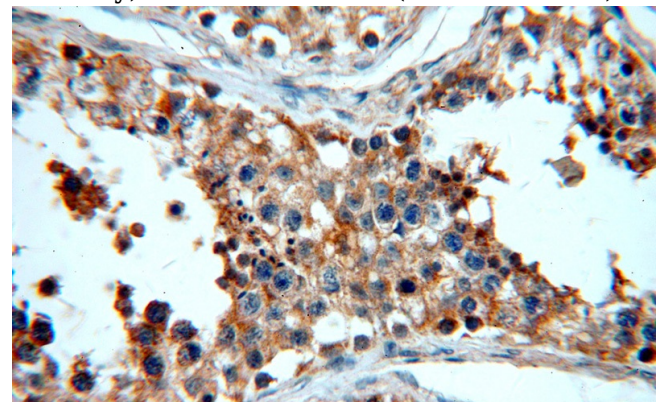
Validations



mouse kidney tissue were subjected to SDS PAGE followed by western blot with Catalog No:115304(SLC16A12 antibody) at dilution of



1:100
Immunohistochemical of paraffin-embedded human testis using Catalog No:115304(SLC16A12 antibody) at dilution of 1:50 (under 10x lens)



Immunohistochemical of paraffin-embedded human testis using Catalog No:115304(SLC16A12 antibody) at dilution of 1:50 (under 40x lens)