

Anti-B2M/beta-2 microglobulin antibody



Catalog Number: 101304

Product name

Anti-B2M/beta-2 microglobulin antibody

Immunogen

[Cynomolgus B2M/beta-2 microglobulin \(His Tag\) recombinant protein](#)

Specificity

Cynomolgus B2M / beta-2 microglobulin

Antibody description

Rabbit polyclonal to B2M/beta-2 microglobulin

Preparation

Produced in rabbits immunized with purified, recombinant Cynomolgus B2M / beta-2 microglobulin (Q6V7J5; Met1-Met119). B2M / beta-2 microglobulin specific IgG was purified by Cynomolgus B2M / beta-2 microglobulin affinity chromatography.

Formulation

0.2 μ m filtered solution in PBS

Storage

This antibody can be stored at 2°C-8°C for one month without detectable loss of activity. Antibody products are stable for twelve months from date of receipt when stored at -20°C to -80°C.

Preservative-Free.

Sodium azide is recommended to avoid contamination (final concentration 0.05%-0.1%). It is toxic to cells and should be disposed of properly. Avoid repeated freeze-thaw cycles.

Clonality

Polyclonal

Ig Type

Rabbit IgG

Applications

ELISA, WB, IP

Dilutions

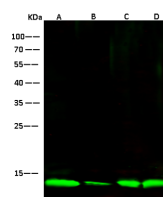
WB: 2-10 μ g/ml

ELISA: 0.1-0.2 μ g/ml

This antibody can be used at 0.1-0.2 μ g/ml with the appropriate secondary reagents to detect Cynomolgus B2M / beta-2 microglobulin. The detection limit for Cynomolgus B2M / beta-2 microglobulin is approximately < 0.039 ng/well.

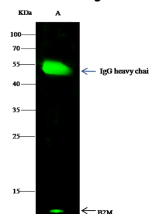
IP: 1-4 μ g/mg of lysate

Validations



Lanes	A	B	C	D
Items	A431	NIH-3T3	Hela	HL60
Sample (whole cell lysate)				
Sample Volume (μ g/lane)	30	30	30	30
Gel	13%SDS-PAGE reducing gel			
Recommended Concentration	2-10 μ g/ml			
Secondary Antibody	Dylight 800-labeled Antibody to Rabbit IgG (H+L), at 1:5000 dilution.			
	Developed using Odyssey imaging system.			
Explanation	Predicted band size : 14 kDa Observed band size : 14 kDa			

B2M / beta-2 microglobulin Antibody, Rabbit PAb, Antigen Affinity Purified, Western blot



Lanes	A
Items	Furkat
Sample (whole cell lysate)	
Sample quantity	0.5 mg
IP antibody quantity	2 μ g
Protein G agarose	15 μ l of 50% Protein G Agarose
Gel	13%SDS-PAGE reducing gel
Primary antibody	Cynomolgus B2M antibody at 10 μ g/ml
Secondary antibody	Dylight 800-labeled antibody to rabbit IgG (H+L), at 1:5000 dilution.

B2M / beta-2 microglobulin Antibody, Rabbit PAb, Antigen Affinity Purified, Immunoprecipitation

Immunochemical staining of human CLSTN1 in

Anti-B2M/beta-2 microglobulin antibody



Catalog Number: 101304

human brain with rabbit polyclonal antibody (0.2 $\mu\text{g/mL}$, formalin-fixed paraffin embedded sections).