

# Anti-KYNU antibody



Catalog Number: 100604

## Product name

Anti-KYNU antibody

## Immunogen

[Mouse KYNU \(His Tag\) recombinant protein](#)

## Specificity

Mouse KYNU

## Antibody description

Rabbit monoclonal to KYNU

## Preparation

This antibody was obtained from a rabbit immunized with purified, recombinant Mouse KYNU (rM KYNU; Q9CXF0; Met1-Ser464).

## Formulation

0.2 µm filtered solution in PBS with 5% treha

## Storage

This antibody can be stored at 2°C-8°C for one month without detectable loss of activity. Antibody products are stable for twelve months from date of receipt when stored at -20°C to -80°C.

Preservative-Free.

Sodium azide is recommended to avoid

contamination (final concentration 0.05%-0.1%). It is toxic to cells and should be disposed of properly. Avoid repeated freeze-thaw cycles.

## Clonality

Monoclonal

## Ig Type

Rabbit IgG

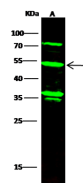
## Applications

WB

## Dilutions

WB: 5-10µg/ml

## Validations



Lanes	A
Items	
Sample (whole cell lysate)	NCI-H460
Sample Volume (µg/lane)	30
Gel	13% SDS-PAGE reducing gel
Recommended Concentration	5-10µg/ml
Secondary Antibody	Dylight 800-labeled Antibody to Rabbit IgG (H+L), at 1:5000 dilution
Explanation	Developed using Odyssey imaging system. Predicted band size : 52 kDa Observed band size : 52 kDa Additional bands at : 70 kDa and 37kDa (We are unsure as to the identity of these extra bands. They are possible non-specific bindings).

KYNU Antibody, Rabbit MAb, Western blot