

COX15 Polyclonal Antibody



Catalog Number: 162204

Product name

COX15 Polyclonal Antibody

Specificity

Human, Mouse, Rat

Antibody description

Polyclonal antibody to COX15

Preparation

Antigen: A synthetic peptide corresponding to a sequence within amino acids 150-250 of human COX15 (NP_510870.1).

Formulation

PBS with 0.02% sodium azide, 50% glycerol, pH7.3.

Storage

Store at -20°C. Avoid freeze / thaw cycles.

Clonality

Polyclonal

Ig Type

Rabbit IgG

Applications

WB, IHC, IF

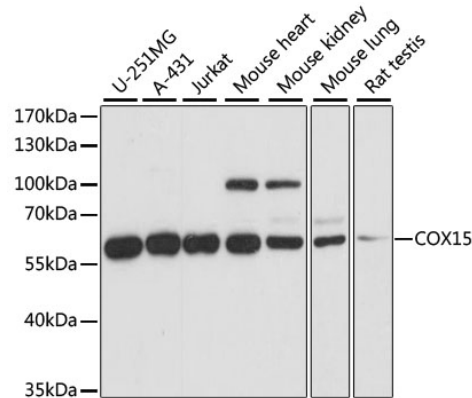
Dilutions

WB 1:500 - 1:2000

IHC 1:50 - 1:100

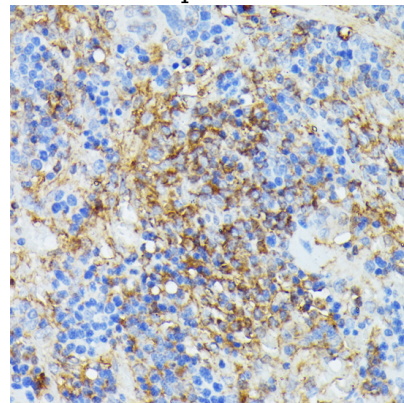
IF 1:50 - 1:100

Validations



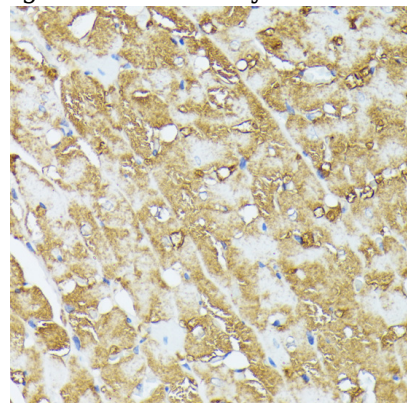
Western blot - COX15 Polyclonal Antibody

Western blot analysis of extracts of various cell lines, using COX15 antibody at 1:1000 dilution. Secondary antibody: HRP Goat Anti-Rabbit IgG (H+L) at 1:10000 dilution. Lysates/proteins: 25ug per lane. Blocking buffer: 3% nonfat dry milk in TBST. Detection: ECL Basic Kit. Exposure time: 5s.



Immunohistochemistry - COX15 Polyclonal Antibody

Immunohistochemistry of paraffin-embedded rat spleen using COX15 antibody at dilution of 1:100



(40x lens).

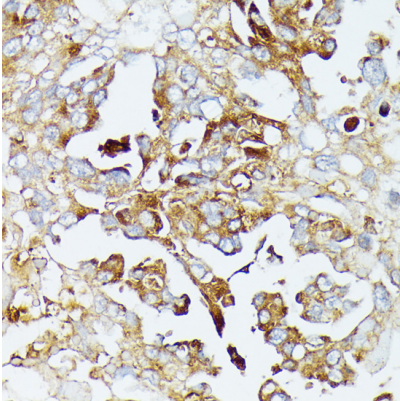
COX15 Polyclonal Antibody



Catalog Number: 162204

Immunohistochemistry - COX15 Polyclonal Antibody

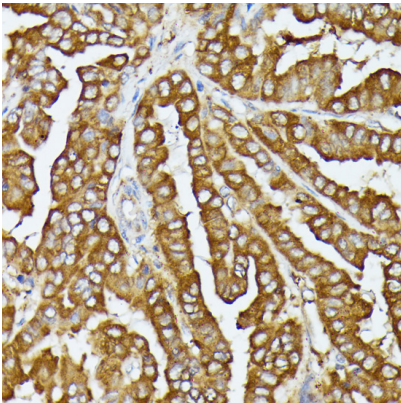
Immunohistochemistry of paraffin-embedded rat heart using COX15 antibody at dilution of 1:100



(40x lens).

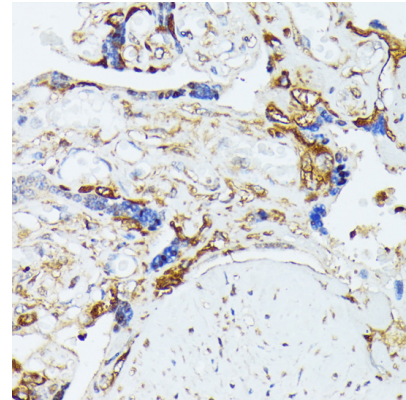
Immunohistochemistry - COX15 Polyclonal Antibody

Immunohistochemistry of paraffin-embedded human lung cancer using COX15 antibody at dilution of 1:100 (40x lens).



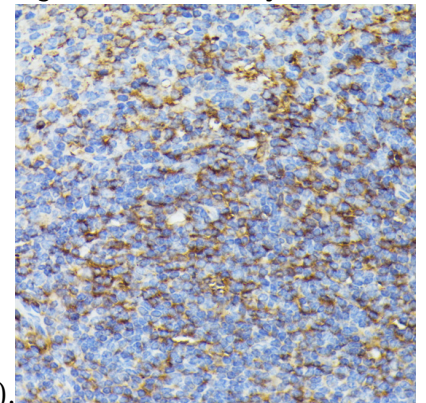
Immunohistochemistry - COX15 Polyclonal Antibody

Immunohistochemistry of paraffin-embedded human thyroid cancer using COX15 antibody at dilution of 1:100 (40x lens).



Immunohistochemistry - COX15 Polyclonal Antibody

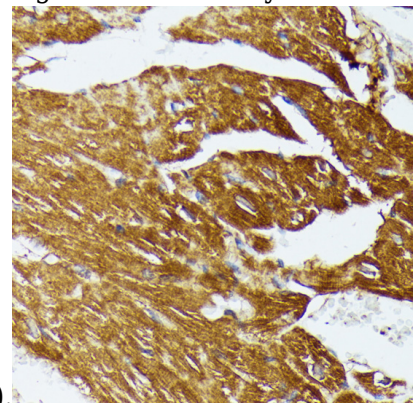
Immunohistochemistry of paraffin-embedded human placenta using COX15 antibody at dilution



of 1:100 (40x lens).

Immunohistochemistry - COX15 Polyclonal Antibody

Immunohistochemistry of paraffin-embedded mouse spleen using COX15 antibody at dilution of



1:100 (40x lens).

Immunohistochemistry - COX15 Polyclonal Antibody

COX15 Polyclonal Antibody



Catalog Number: 162204

Immunohistochemistry of paraffin-embedded

mouse heart using COX15 antibody at dilution of 1:100 (40x lens).