

# Anti-CADM2 antibody



Catalog Number: 142904

## Product name

Anti-CADM2 antibody

## Immunogen

[Human Cell Adhesion Molecule 2 / CADM2 \(His Tag\) recombinant protein](#)

## Specificity

Human Cell Adhesion Molecule 2 / CADM2

## Antibody description

Rabbit Polyclonal to Human CADM2

## Preparation

Produced in rabbits immunized with purified, recombinant Human Cell Adhesion Molecule 2 / CADM2 . Cell Adhesion Molecule 2 / CADM2 specific IgG was purified by Human Cell Adhesion Molecule 2 / CADM2 affinity chromatography.

## Formulation

0.2 µm filtered solution in PBS

## Storage

This antibody can be stored at 2°C-8°C for one month without detectable loss of activity. Antibody products are stable for twelve months from date of receipt when stored at -20°C to -80°C. Preservative-Free.

Sodium azide is recommended to avoid contamination (final concentration 0.05%-0.1%). It is toxic to cells and should be disposed of properly. Avoid repeated freeze-thaw cycles.

## Clonality

Polyclonal

## Ig Type

Rabbit IgG

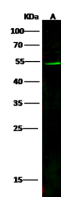
## Applications

WB

## Dilutions

WB: 5-20 µg/ml

## Validations



Items	Lanes	A
Sample (whole cell lysate)		HepG2
Sample Volume (µg/lane)		30
Gel		13% SDS-PAGE reducing gel
Recommended Concentration		10 µg/ml
Secondary Antibody		Dylight 800 labeled Antibody to Rabbit IgG (H+L), at 1:5000 dilution.
		Developed using Odyssey imaging system.
Explanation		Predicted band size : 48 kDa Observed band size : 54 kDa

Cell Adhesion Molecule 2 / CADM2 Antibody, Rabbit PAb, Antigen Affinity Purified, Western blot