

CP110 antibody

Catalog Number: 109504

Product name

CP110 antibody

Immunogen

[Human CP110 Recombinant protein \(GST tag\)](#)

Specificity

Human, Mouse, Rat; other species not tested.

Antibody description

CP110 Rabbit Polyclonal antibody. Positive FC detected in HeLa cells. Positive IF detected in MEF/HeLa cells. Positive IHC detected in human prostate cancer tissue. Positive IP detected in HeLa cells. Positive WB detected in HeLa cells, K-562 cells. Observed molecular weight by Western-blot: 113kd

Preparation

This antibody was obtained by immunization of CP110 recombinant protein (Accession Number: NM_001323572). Purification method: Antigen affinity purified.

Formulation

PBS with 0.02% sodium azide and 50% glycerol pH 7.3.

Storage

Store at -20°C. DO NOT ALIQUOT

Clonality

Polyclonal

Ig Type

Rabbit IgG

Applications

ELISA, WB, IHC, IF, IP, FC

Dilutions

Recommended Dilution:

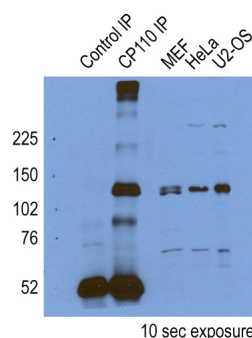
WB: 1:500-1:5000

IP: 1:500-1:5000

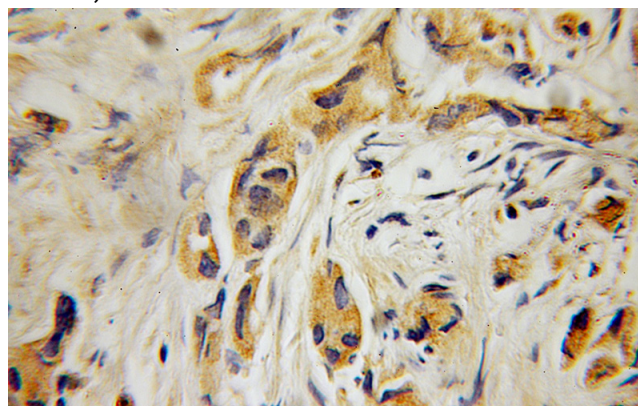
IHC: 1:20-1:200

IF: 1:20-1:200

Validations



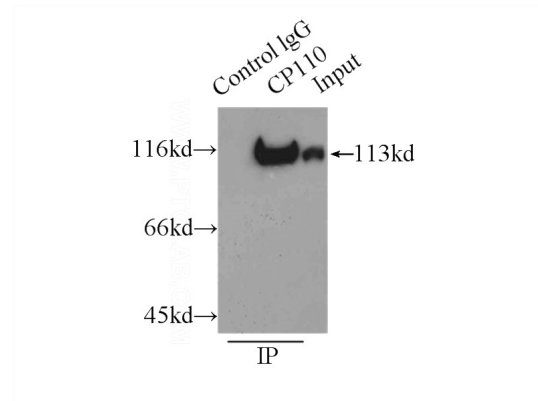
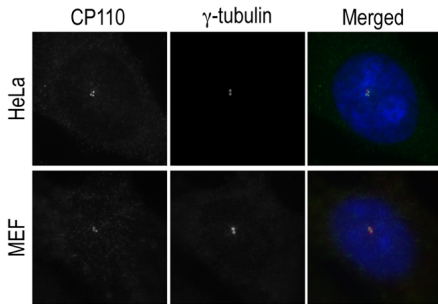
IP result of CP110(Catalog No:109504) by Dr. Corbit, Kevin.



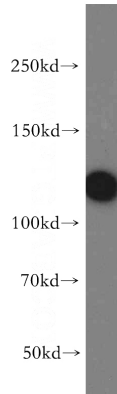
Immunohistochemical of paraffin-embedded human prostate cancer using Catalog No:109504(CP110 antibody) at dilution of 1:100 (under 10x lens)

CP110 antibody

Catalog Number: 109504



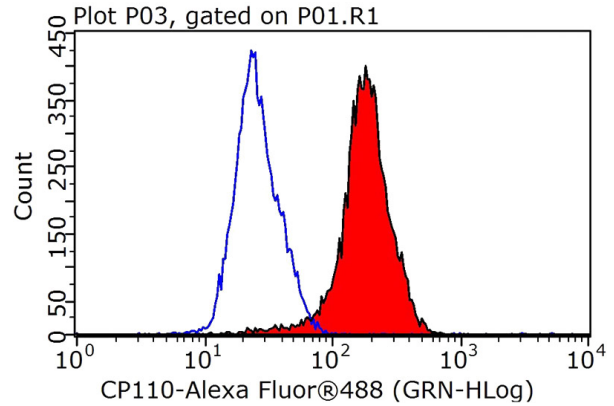
IF result (Centrioles) of anti-CP110 (Catalog



No:109504) by Dr. Corbit Kevin.

HeLa cells were subjected to SDS PAGE followed by western blot with Catalog No:109504 (CP110 antibody) at dilution of 1:400

IP Result of anti-CP110 (IP:Catalog No:109504, 3ug; Detection:Catalog No:109504 1:1000) with HeLa cells lysate 3000ug.



1×10^6 HeLa cells were stained with .2ug CP110 antibody (Catalog No:109504, red) and control antibody (blue). Fixed with 4% PFA blocked with 3% BSA (30 min). Alexa Fluor 488-conjugated AffiniPure Goat Anti-Rabbit IgG(H+L) with dilution 1:1000.