

Anti-MAP4K2 antibody



Catalog Number: 176504

Product name

Anti-MAP4K2 antibody

Specificity

Human, Rat

Antibody description

Rabbit polyclonal antibody to MAP4K2

Preparation

This antigen of this antibody was synthesized peptide derived from human gck/glk. at aa range: 221-270

Formulation

Liquid, Liquid in PBS containing 50% glycerol, 0.5% BSA and 0.02% sodium azide.

Storage

Store at +4°C after thawing. Aliquot store at -20°C or -80°C. Avoid repeated freeze / thaw cycles.

Clonality

Polyclonal

Ig Type

Rabbit IgG

Applications

WB

Dilutions

WB: 1:500-1:2000

Validations

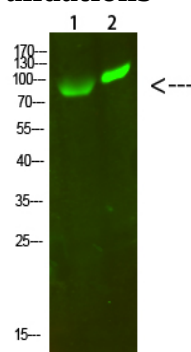


Fig1:; Western Blot analysis of 1,293T 2,hela cells using primary antibody diluted at 1:1000(4°C overnight). Secondary antibody: Goat Anti-rabbit IgG IRDye 800(diluted at 1:5000, 25°C, 1 hour)