

# Phospho-Estrogen Receptor beta-S105 pAb



Catalog Number: 166504

## Product name

Phospho-Estrogen Receptor beta-S105 pAb

## Specificity

Human, Mouse, Rat

## Antibody description

Polyclonal antibody to Phospho-Estrogen Receptor beta-S105

## Preparation

Antigen: A phospho specific peptide corresponding to residues surrounding S105 of human Estrogen Receptor beta

## Formulation

PBS with 0.02% sodium azide, 50% glycerol, pH7.3.

## Storage

Store at -20°C. Avoid freeze / thaw cycles.

## Clonality

Polyclonal

## Ig Type

Rabbit IgG

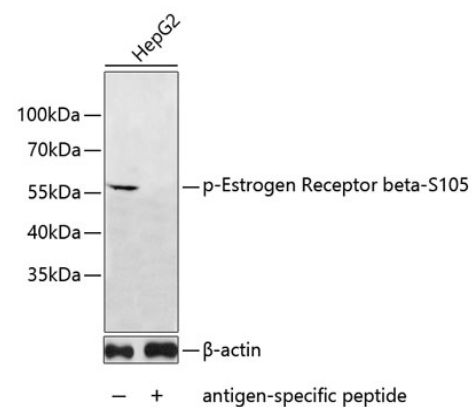
## Applications

WB

## Dilutions

WB 1:500 - 1:1000

## Validations



Western blot - Phospho-Estrogen Receptor beta-S105 pAb

Western blot analysis of extracts of HepG2 cells, using Phospho-Estrogen Receptor beta-S105 antibody .Secondary antibody: HRP Goat Anti-Rabbit IgG (H+L) at 1:10000 dilution.Lysates/proteins: 25ug per lane.Blocking buffer: 3% BSA.