

Anti-HSPBAP1 antibody



Catalog Number: 175504

Product name

Anti-HSPBAP1 antibody

WB:1:500-2000

IHC-P:1:400-800

Specificity

Human, Mouse, Rat, Dog, Pig, Cow, Horse, Sheep

Validations

Antibody description

Rabbit polyclonal antibody to HSPBAP1

Preparation

This antigen of this antibody was klh conjugated synthetic peptide derived from human hspbap1 151-250/488

Formulation

Liquid, 0.01M TBS(pH7.4) with 1% BSA, 0.03% Proclin300 and 50% Glycerol.

Storage

Store at -20°C for one year. Avoid repeated freeze/thaw cycles. The lyophilized antibody is stable at room temperature for at least one month and for greater than a year when kept at -20°C. When reconstituted in sterile pH 7.4 0.01M PBS or diluent of antibody the antibody is stable for at least two weeks at 2-4°C.

Clonality

Polyclonal

Ig Type

Rabbit IgG

Applications

WB, IHC-P

Dilutions

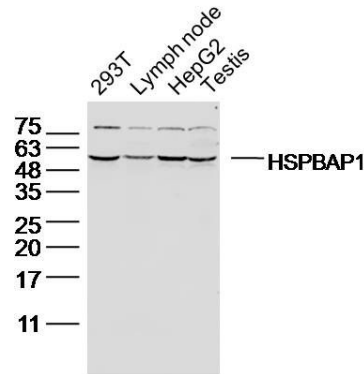


Fig1: Sample:; 293T Cell(human) Lysate at 40 ug; Lymph node (mouse) Lysate at 40 ug; HepG2 Cell(human) Lysate at 40 ug; Testis (mouse) Lysate at 40 ug; Primary: Anti- HSPBAP1 at 1/300 dilution; Secondary: IRDye800CW Goat Anti-Rabbit IgG at 1/20000 dilution; Predicted band size: 55kD; Observed band size: 55 kD

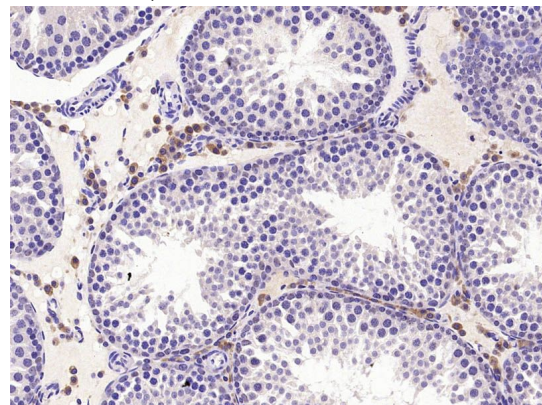


Fig2: Paraformaldehyde-fixed, paraffin embedded (Rat testis); Antigen retrieval by microwave in sodium citrate buffer (pH6.0) ; Block endogenous peroxidase by 3% hydrogen peroxide for 30 minutes; Blocking buffer (3% BSA) at RT for 30min; Antibody incubation with (HSPBAP1) Polyclonal Antibody, Unconjugated at 1:400 overnight at 4°C, followed by conjugation to the secondary antibody (labeled with HRP)and DAB staining.