

Anti-TCF7L1 antibody



Catalog Number: 142104

Product name

Anti-TCF7L1 antibody

Specificity

Human TCF7L1 / TCF3

Antibody description

Rabbit Polyclonal to Human TCF7L1

Preparation

Produced in rabbits immunized with a synthetic peptide corresponding to the N-terminus of the Human TCF7L1 / TCF3, and purified by antigen affinity chromatography.

Formulation

0.2 µm filtered solution in PBS

Storage

This antibody can be stored at 2°C-8°C for one month without detectable loss of activity. Antibody products are stable for twelve months from date of receipt when stored at -20°C to -80°C.

Preservative-Free.

Sodium azide is recommended to avoid contamination (final concentration 0.05%-0.1%). It is toxic to cells and should be disposed of properly. Avoid repeated freeze-thaw cycles.

Clonality

Polyclonal

Ig Type

Rabbit IgG

Applications

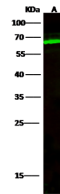
WB, IP

Dilutions

WB: 5-20 µg/ml

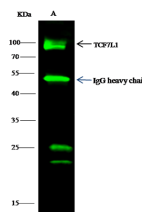
IP: 4-8 uL/mg of lysate

Validations



Items	Lanes
Sample (whole cell lysate)	A
Sample Volume (µg/lane)	HepG2 30
Gel	13% SDS-PAGE reducing gel
Recommended Concentration	10 µg/ml
Secondary Antibody	DyLight 800-labeled Antibody To Rabbit IgG (H+L), at 1:5000 dilution. Developed using Odyssey imaging system.
Explanation	Predicted band size : 63 kDa Observed band size : 63 kDa

TCF7L1 / TCF3 Antibody, Rabbit PAb, Antigen Affinity Purified, Western blot



Items	Lanes
Sample (whole cell lysate)	A
Sample quantity	293T 0.5 mg
IP antibody quantity	4 µg
Immunomagnetic beads Protein G	60 ng
Gel	13% SDS-PAGE reducing gel
Primary antibody	KLJF-SMCC-sinoA14271/KLJF-SMCC-sinoA1735 antibody at 10 µg/ml
Secondary antibody	DyLight 800-labeled antibody to rabbit IgG (H+L), at 1:5000 dilution

TCF7L1 / TCF3 Antibody, Rabbit PAb, Antigen Affinity Purified, Immunoprecipitation