

# Anti-IL20RA/IL-20RA antibody



Catalog Number: 103804

## Product name

Anti-IL20RA/IL-20RA antibody

## Immunogen

[Human IL20RA/IL-20RA \(His Tag\) recombinant protein](#)

## Specificity

Human IL20RA / IL-20RA

**No cross-reactivity** in ELISA with Human IFN $\gamma$ R1; Human IL10RB

## Antibody description

Rabbit monoclonal to IL20RA/IL-20RA

## Preparation

This antibody was obtained from a rabbit immunized with purified, recombinant Human IL20RA / IL-20RA (rh IL20RA / IL-20RA; NP\_055247.21; Met 1-Lys 250).

## Formulation

0.2  $\mu$ m filtered solution in PBS with 5% trehalose

## Storage

This antibody can be stored at 2°C-8°C for one month without detectable loss of activity. Antibody products are stable for twelve months from date of receipt when stored at -20°C to -80°C.

Preservative-Free.

Sodium azide is recommended to avoid contamination (final concentration 0.05%-0.1%). It is toxic to cells and should be disposed of properly. Avoid repeated freeze-thaw cycles.

## Clonality

Monoclonal

## Ig Type

Rabbit IgG

## Applications

ELISA, IHC-P

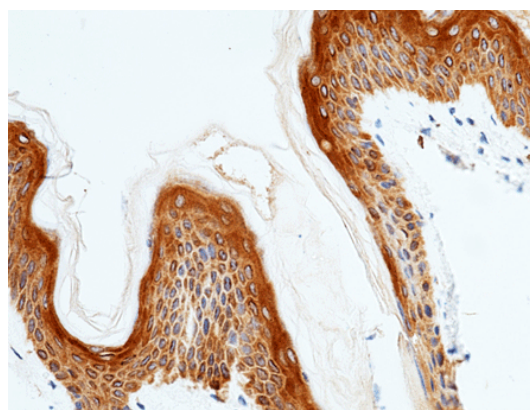
## Dilutions

ELISA: 0.5-1  $\mu$ g/mL

This antibody can be used at 0.5-1  $\mu$ g/mL with the appropriate secondary reagents to detect Human IL20Ra.

IHC-P: 1-10  $\mu$ g/mL

## Validations



IL20RA / IL-20RA Antibody, Rabbit MAb, Immunohistochemistry

Immunochemical staining of human IL20Ra in human skin with rabbit monoclonal antibody (5  $\mu$ g/mL, formalin-fixed paraffin embedded sections). Positive staining was localized to stratified squamous epithelium.