

Anti-TUBA4A antibody



Catalog Number: 141804

Product name

Anti-TUBA4A antibody

Specificity

Human TUBA4A

Antibody description

Rabbit Polyclonal to Human TUBA4A

Preparation

Produced in rabbits immunized with a synthetic peptide corresponding to the C-terminus of the Human TUBA4A, and purified by antigen affinity chromatography.

Formulation

0.2 μ m filtered solution in PBS

Storage

This antibody can be stored at 2°C-8°C for one month without detectable loss of activity. Antibody products are stable for twelve months from date of receipt when stored at -20°C to -80°C. Preservative-Free.

Sodium azide is recommended to avoid contamination (final concentration 0.05%-0.1%). It is toxic to cells and should be disposed of properly. Avoid repeated freeze-thaw cycles.

Clonality

Polyclonal

Ig Type

Rabbit IgG

Applications

WB, ICC/IF, IF, IP

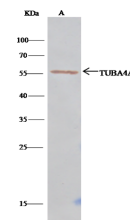
Dilutions

WB: 5-20 μ g/ml

ICC/IF: 0.5-3 μ g/mL

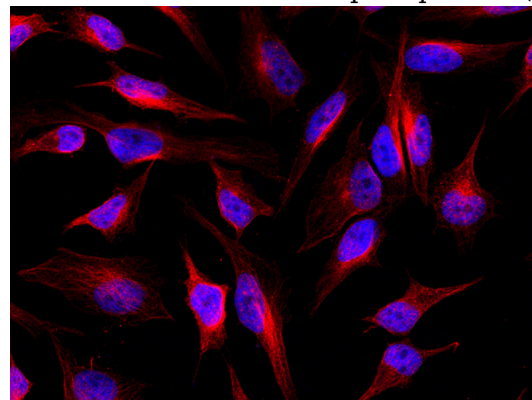
IP: 1-4 uL/mg of lysate

Validations

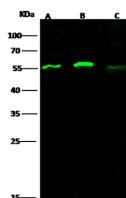


Item	Lanes
Sample (whole cell lysate)	K562
Sample quantity	0.5 mg.
IP antibody quantity	4 μ L.
Protein G agarose	15 μ L of 50% Protein G Agarose
Gel	13% SDS-PAGE reducing gel
Primary antibody	KLH-SMCC-sinoA2134/KLH-SMCC-sinoA2138 antibody at 10 μ g/ml
Secondary antibody	Cleav-Block IP Detection Reagent (HRP) at 1:1000 dilution

Human TUBA4A Immunoprecipitation(IP) 15407



Human TUBA4A Immunofluorescence(IF) 15406



Item	Lanes
Sample (whole cell lysate)	Hela, Jurkat, K562
Sample volume (μ g/lane)	30, 30, 30
Gel	13% SDS-PAGE reducing gel
Recommended Concentration	5-20 μ g/ml
Secondary Antibody	Dylight 800-labeled Antibody to Rabbit IgG (H+L), at 1:5000 dilution.
Explanation	Developed using Odyssey imaging system. Predicted band size : 50 kDa Observed band size : 55 kDa

Human TUBA4A Western blot (WB) 15405