

# Anti-Metabotropic Glutamate Receptor 2/MGLUR2 Rabbit antibody



Catalog Number: 167404

## Product name

Rabbit IgG

Anti-Metabotropic Glutamate Receptor 2/MGLUR2 Rabbit antibody

## Applications

WB, IHC-P, ICC/IF, FC

## Specificity

Human, Mouse, Rat

## Dilutions

WB: 1/2000-1/10000

## Antibody description

Metabotropic Glutamate Receptor 2/MGLUR2 Rabbit polyclonal antibody

IHC: 1/50

ICC/IF: 1/50

FC: 1/20

## Preparation

Antigen: A synthetic peptide of human Metabotropic Glutamate Receptor 2

## Validations

## Formulation

Supplied in 50nM Tris-Glycine(pH 7.4), 0.15M NaCl, 40%Glycerol, 0.01% sodium azide and 0.05% BSA.

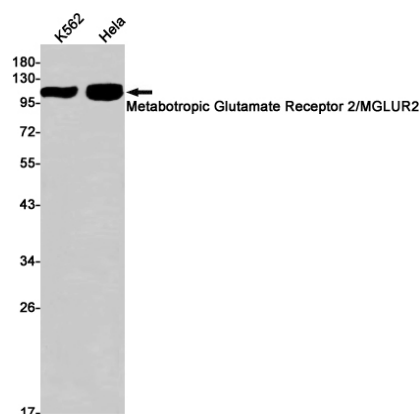
## Storage

Store at -20°C. Stable for 12 months from date of receipt.

## Clonality

Polyclonal

## Ig Type



Western blot detection of Metabotropic Glutamate Receptor 2 in K562, HeLa cell lysates using Metabotropic Glutamate Receptor 2 Rabbit pAb(1:1000 diluted). Predicted band size: 99kDa. Observed band size: 99kDa.