

# SMU1 antibody



Catalog Number: 115404

## Product name

SMU1 antibody

WB: 1:200-1:2000

IHC: 1:20-1:200

## Specificity

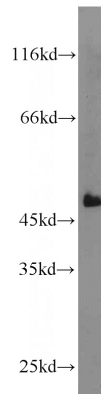
Human, Mouse, Rat; other species not tested.

IF: 1:10-1:100

## Antibody description

SMU1 Rabbit Polyclonal antibody. Positive WB detected in mouse liver tissue, K-562 cells. Positive IHC detected in human kidney tissue, human brain tissue, human hepat°Cirrhosis tissue, human ovary tissue, human testis tissue. Positive IF detected in HepG2 cells. Observed molecular weight by Western-blot: 45-50 kDa

## Validations



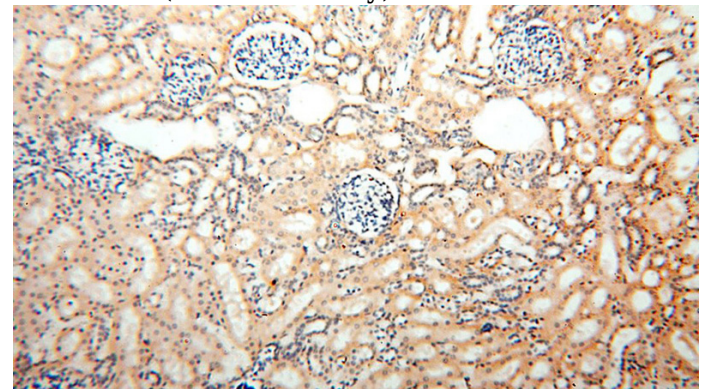
## Preparation

This antibody was obtained by immunization of SMU1 recombinant protein (Accession Number: NM\_018225). Purification method: Antigen affinity purified.

mouse liver tissue were subjected to SDS PAGE followed by western blot with Catalog No:115404(SMU1 antibody) at dilution of 1:1000

## Formulation

PBS with 0.02% sodium azide and 50% glycerol pH 7.3.



## Storage

Store at -20°C. DO NOT ALIQUOT

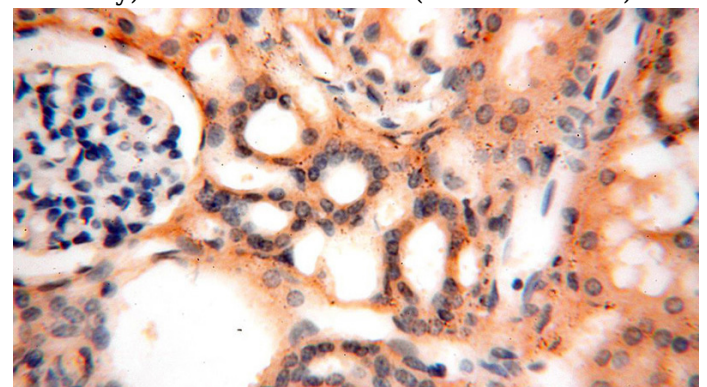
## Clonality

Polyclonal

Immunohistochemical of paraffin-embedded human kidney using Catalog No:115404(SMU1 antibody) at dilution of 1:100 (under 10x lens)

## Ig Type

Rabbit IgG



## Applications

ELISA, WB, IHC, IF

## Dilutions

Recommended Dilution:

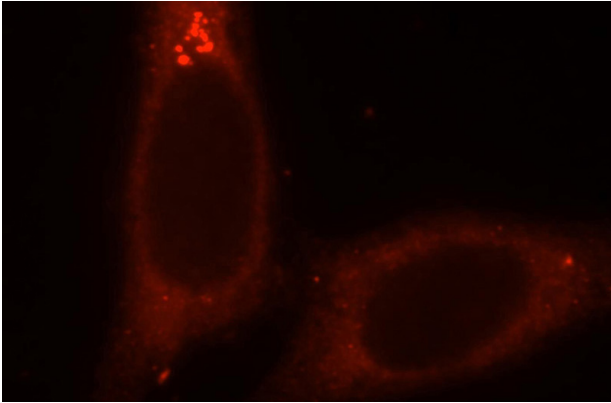
Immunohistochemical of paraffin-embedded

# SMU1 antibody

Catalog Number: 115404

---

human kidney using Catalog No:115404(SMU1 antibody) at dilution of 1:100 (under 40x lens)



Immunofluorescent analysis of HepG2 cells, using SMU1 antibody Catalog No:115404 at 1:25 dilution and Rhodamine-labeled goat anti-rabbit IgG (red).