

# RAB10 antibody

Catalog Number: 114404

## Product name

RAB10 antibody

## Specificity

Human, Mouse, Rat; other species not tested.

## Antibody description

RAB10 Rabbit Polyclonal antibody. Positive WB detected in human brain tissue, mouse brain tissue, mouse skeletal muscle tissue, rat brain tissue. Positive IHC detected in human prostate cancer tissue, human colon cancer tissue. Observed molecular weight by Western-blot: 29 kDa

## Preparation

This antibody was obtained by immunization of RAB10 recombinant protein (Accession Number: NM\_016131). Purification method: Antigen affinity purified.

## Formulation

PBS with 0.1% sodium azide and 50% glycerol pH 7.3.

## Storage

Store at -20°C. DO NOT ALIQUOT

## Clonality

Polyclonal

## Ig Type

Rabbit IgG

## Applications

ELISA, WB, IHC

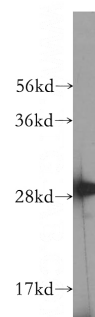
## Dilutions

Recommended Dilution:

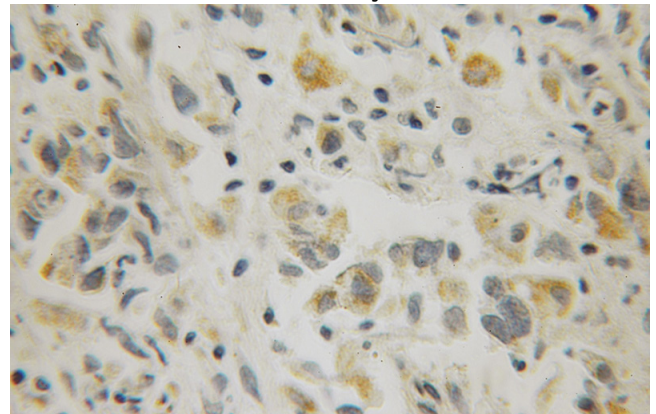
WB: 1:500-1:5000

IHC: 1:20-1:200

## Validations



human brain tissue were subjected to SDS PAGE followed by western blot with Catalog No:114404(RAB10 antibody) at dilution of 1:400



Immunohistochemical of paraffin-embedded human prostate cancer using Catalog No:114404(RAB10 antibody) at dilution of 1:100 (under 10x lens)