

LY96/MD2 antibody



Catalog Number: 112404

Product name

LY96/MD2 antibody

IHC: 1:20-1:200

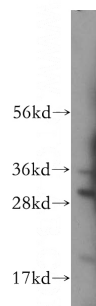
Specificity

Human; other species not tested.

Validations

Antibody description

LY96/MD2 Rabbit Polyclonal antibody. Positive WB detected in U-937 cells. Positive IHC detected in human kidney tissue. Observed molecular weight by Western-blot: 20 kDa and 30 kDa and 35 kDa



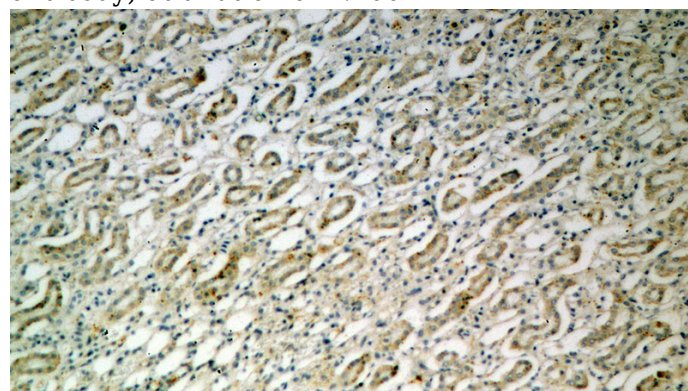
Preparation

This antibody was obtained by immunization of LY96/MD2 recombinant protein (Accession Number: NM_015364). Purification method: Antigen affinity purified.

U-937 cells were subjected to SDS PAGE followed by western blot with Catalog No:112404(LY96 antibody) at dilution of 1:400

Formulation

PBS with 0.1% sodium azide and 50% glycerol pH 7.3.



Storage

Store at -20°C. DO NOT ALIQUOT

Immunohistochemical of paraffin-embedded human kidney using Catalog No:112404(LY96 antibody) at dilution of 1:50 (under 10x lens)

Clonality

Polyclonal

Ig Type

Rabbit IgG

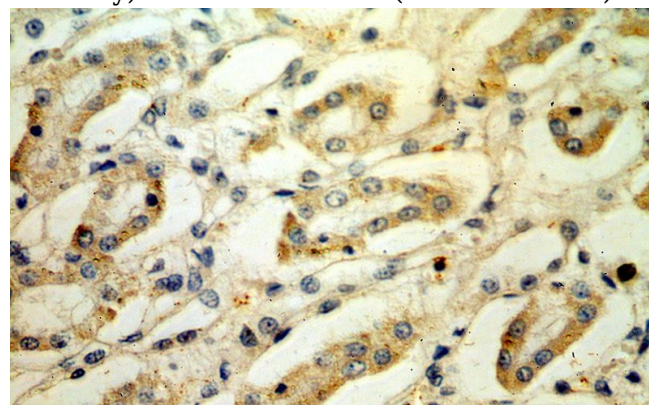
Applications

ELISA, WB, IHC

Dilutions

Recommended Dilution:

WB: 1:200-1:2000



Immunohistochemical of paraffin-embedded human kidney using Catalog No:112404(LY96 antibody) at dilution of 1:50 (under 40x lens)